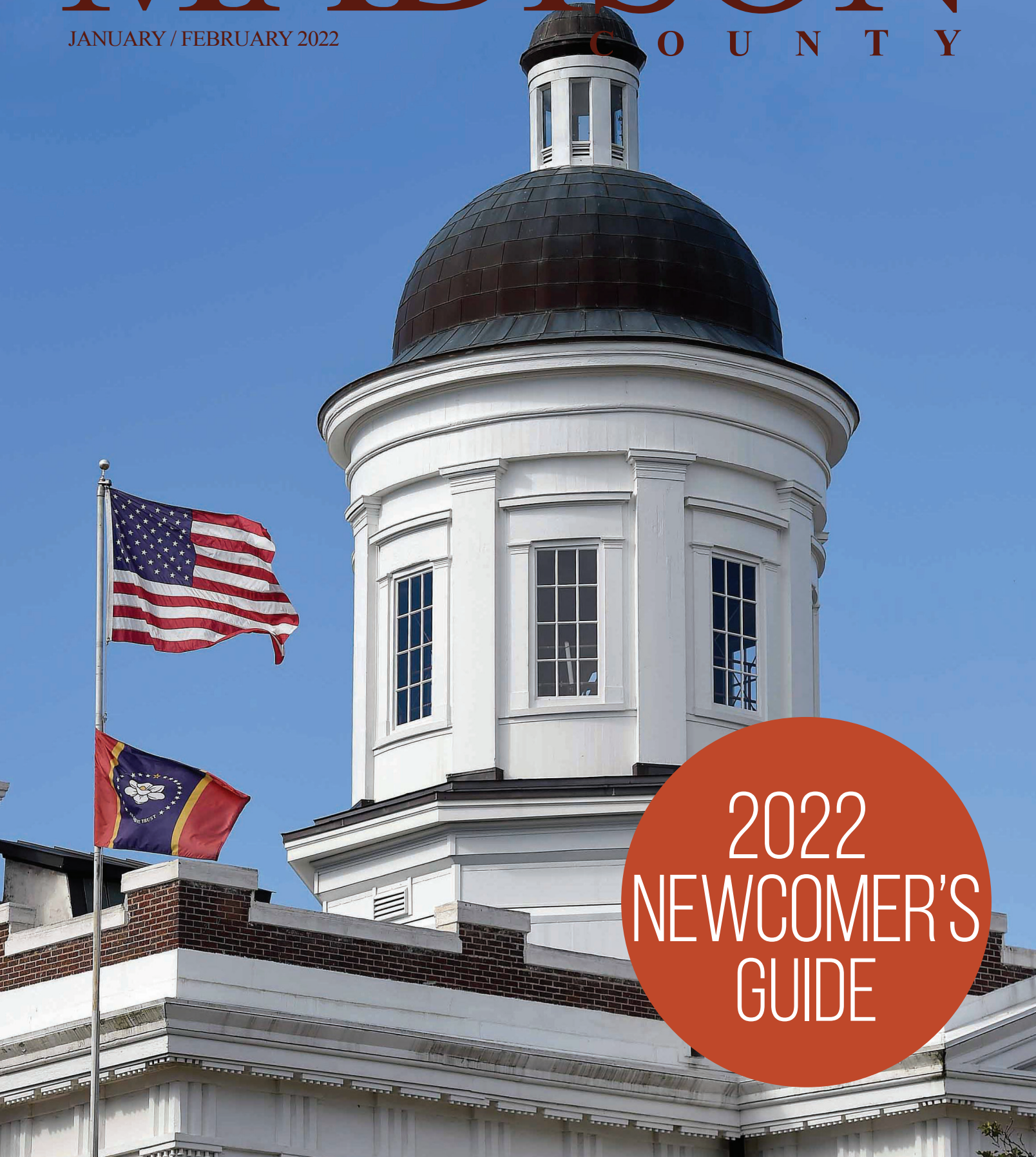


MADISON

JANUARY / FEBRUARY 2022

C O U N T Y



2022
NEWCOMER'S
GUIDE



**Good news.
Rates just
got lower.**

John Dorsa, Agent
325 Hwy 51 North
Ridgeland, MS 39157
Bus: 601-790-2600
www.jdorsa.com

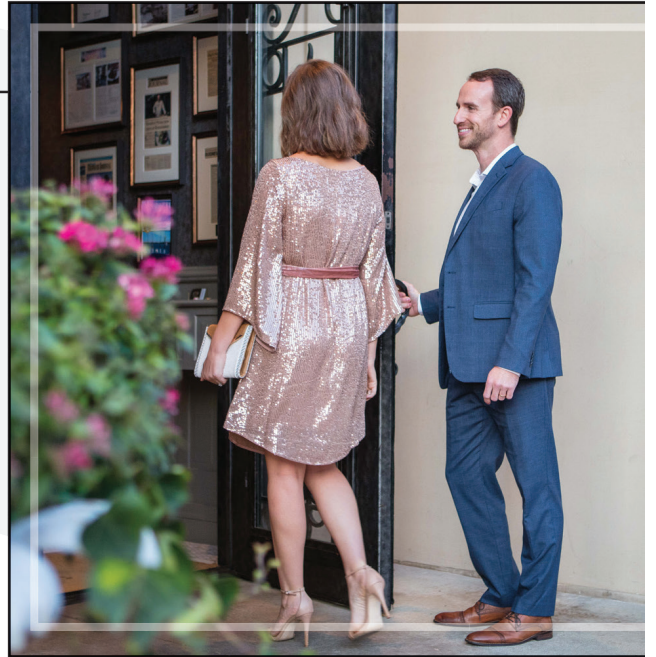
I'm excited to announce auto insurance rates just went down. I can help you find coverage that works for you.

LET'S TALK TODAY.



State Farm Mutual Automobile Insurance Company, State Farm Indemnity Company, Bloomington, IL 1901155
State Farm County Mutual Insurance Company of Texas, Richardson, TX

KOESTLER — PRIME —



A ROMANTIC NIGHT FOR TWO

**DATE NIGHT OR
HOLIDAY PARTY,
A PERFECT CHOICE**

PARTIES UP TO 150 PEOPLE

681.957.3753 • KOESTLERPRIME.COM
1888 HIGHLAND COLONY PKWY SUITE 6881

BIAGGI'S

RISTORANTE ITALIANO



ORDER ONLINE
for curbside pick-up



RENAISSANCE at COLONY PARK

970 Highland Colony Parkway • Ridgeland
(601) 354.6600 • www.BIAGGIS.com



Dr. Brown and his staff
would like to welcome
you to Madison County!

Let us give you a beautiful smile.



Dr. Brown's SMILES BY DESIGN

Eugene C. Brown, Jr., D.D.S., M.S.

5800 Ridgewood Road
Jackson / 601-957-1711

125 Jones Street
Madison / 601-853-0303



Orthodontics Exclusively



www.dreugenebrown.com

DAMON SYSTEM More than straight teeth CareCredit invisalign



POLLES
PROPERTIES LLC



**LOVE WHERE YOU
LIVE, WORK AND PLAY!**

**LET POLLES PROPERTIES LLC
HELP YOU WITH ANY OF YOUR
REAL ESTATE NEEDS.**

JOHN POLLES
(601)941-7168

John@pollesproperties.com

AMANDA POLLES
(601)278-6871

Amanda@pollesproperties.com

654 Bellevue Drive | Madison
www.pollesproperties.com
601 898 3364

J. ALLAN'S

BROOKHAVEN HATTIESBURG RIDGELAND



"SUNDAY MORNING"



Amy Carlisle - 50x50



PAULA JACKSON

"There are no rules in being creative...Make your own"

FIFTY ONE PLACE • 637 HWY 51 • RIDGELAND, MS • 601-506-6609 

Improve Your Vision, Improve Your Life!

Close-up items appearing more blurry? If you're in your late 30s or 40s, you may be experiencing farsightedness. Jackson Eye Associates wants to help you get back to seeing the details. Let our team give you the individualized eye care you deserve and send you home with a new pair of frames from JEA Optical.

Call or visit our website to book an appointment today!

JACKSONEYE.COM |  



JEA

JACKSON EYE ASSOCIATES
CLINIC • SURGERY • OPTICAL

Your Vision, Our Mission.™



©2021 JEA

HOTWORX

Benefits & Results:

- Sports recovery
- Reduces cellulite
- Stress Reeducation
- Increase Calorie Burn
- Pain Relief
- Detoxification
- Lower Blood Pressure
- Anti-Aging
- Skin Rejuvenation
- Improved circulation
- Weight Loss

More Workout Less Time with

3D TRAINING

Heat, Infrared energy, and Exercise

601.499.0884   @hotworxmadison
219 Garden Park Drive | Suite 400 | Madison, Ms

JACKSON
601.353.2020

MADISON
601.853.2020

CLINTON
601.924.9750



PUBLISHED BY
The Madison County Journal

PUBLISHER
James E. Prince III

**ASSOCIATE EDITOR
& PUBLISHER**
Michael Simmons

EDITOR
Scott Hawkins

LAYOUT & DESIGN
Rachel Browning Truong

**CONTRIBUTING
PHOTOGRAPHERS**
Chris Todd

CONTRIBUTING WRITERS
Duncan Dent,
Jana Hoops & John Lee

**ADVERTISING
ACCOUNT EXECUTIVE**
Joy Stewart
joy@onlinemadison.com
601.853.4222

ADVERTISING DESIGN
Godfrey Jones

Madison County Magazine is a bi-monthly supplement to the Madison County Journal designed to promote Madison County in an informative and positive manner. We welcome contributions of articles and photos; however, they will be subject to editing and availability of space and subject matter. Photographs, comments, questions, subscription requests and ad placement inquiries are invited! Return envelopes and postage must accompany all labeled materials submitted if a return is requested. No portion of this publication may be reproduced without written permission of the publisher. The opinions expressed in Madison County Magazine are those of the authors or columnists and do not necessarily reflect the views of the publisher, nor do they constitute an endorsement of products or services herein. We reserve the right to refuse any and all advertising.

Subscribe to the magazine by subscribing to the Journal, mymcj.com, or call the office at (601) 853-4222 © 2020 Madison County Publishing Company.

CONTENTS

JANUARY / FEBRUARY



2022



7	DRINKS	35	PRIVATE SCHOOLS
8	TRENDS:	40	HIGHER EDUCATION
	Engagement Rings	42	HEALTHCARE
10	PEOPLE:	45	PARKS AND
	Organization		RECREATION
13	REALTY SHOWCASE	48	DINING
25	CONTACT INFO	50	SHOPPING
28	OUT AND ABOUT	52	CHURCHES
30	CAN'T MISS EVENTS	63	GETTING SETTLED
32	PUBLIC SCHOOLS		

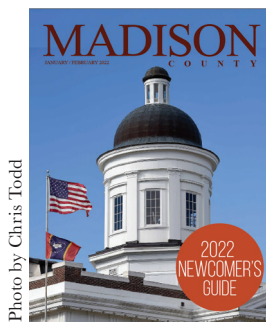


Photo by Chris Todd

On the Cover:
The historic Madison County Courthouse in Canton.

A COCKTAIL RENAISSANCE

by Duncan Dent

The beauty of a well-appointed home bar is the ease of access to an array of cocktails in your own home. The drawback is that you have to act as bartender.

Take the Penicillin. Along with the Paper Plane, this is one of the banner drinks to come out of the new cocktail renaissance. The drink was concocted by Sam Ross in the mid-2000s at the now-defunct Milk & Honey bar. The Milk & Honey bar opened its doors on New Year's Eve 1999 in New York City and started the global trend of the speakeasy bar of which The Apothecary at Brent's Drugs has drawn clear influence.

Ross' concoction, itself a riff on Milk & Honey invention known as the Gold Rush, is simple enough. It trades bourbon for blended scotch and is rounded out by a sweet and spicy ginger syrup, lemon juice and topped off with a smoky Islay Scotch float.

The result is smoky and tart with a gingery bite at first sip and a wealth of other flavors that pop up as the cocktail develops in the glass. A staple of modern cocktail culture.

The problem is making it. Even if you have the two varieties of scotch and candied ginger on hand, you still have to make the syrup yourself. One recipe I found called for making the honey and ginger syrup separately and the laborious task of juicing a lemon. You might as well just crack a beer.

Your saving grace is the two-ingredient cocktail. A quick glance at your bar, I bet you have a liquor and

a liqueur you can shake together and serve a half-decent cocktail, though be warned there are probably many not-so-decent combinations as well.

Take a few weeks ago. We were celebrating a friend's birthday and worked up a taste for Manhattans. The drink is traditionally two parts bourbon or rye, one part sweet vermouth rounded out with a few dashes of bitters and a maraschino cherry. (For the sake of this experiment, bitters and garnishes do not count as ingredients.) After some experimenting, we found that substituting Cherry Heering Liqueur allowed one to forgo the garnish all together. The result was a little syrupy but could easily pass as the classic cocktail.

As the night went on, we continued to iterate. Eventually, we broke out a bottle of limoncello and continued on our journey of discovery.

Below we have a cocktail that is a little more battle-tested, The Rusty Nail.

Speaking of the ubiquity of the cocktail, drink historian David Wondrich once wrote for Esquire, "the Rusty Nail is to the classic suburban rec room as coffee is to the church basement."

The Drambuie, a sweet scotch-based liqueur, may be new to many readers and may cost more than the bottle of scotch many will use but don't balk because it just requires a little bit to get you started.





MAKE YOUR OWN

INGREDIENTS

2 ounces of blended scotch
half an ounce of Drambuie

DIRECTIONS

combine the scotch and Drambuie
in a double rocks glass over ice
and stir. Garnish with a lemon peel.

FINDING THE PERFECT FIT

By Jana Hoops

Choosing the perfect engagement ring symbolizes a love that never changes – but the ring itself is always influenced by prevailing trends of the day.

While some elements of the ring (such as a solitaire style with a single round stone set in white or yellow gold) are timeless, the market is always evolving as details like metal color, band materials and the stone shape and color change every few years, says Brian Beckham, jewelry designer/artist and owner of Beckham Custom Jewelry Co. in Jackson.

With Valentine's Day coming soon, this is a perfect time to learn the basics of creating a ring that tells your own special story. And with 30 years of experience in the business, Beckham's knowledge has helped hundreds of couples get off to a happy start.

HISTORY

European customs dating back to the 1800s were the main influencers of American engagement rings, with one major exception, Beckham said. The standard stone for European engagement rings then was a sapphire.

"The idea of using a diamond for the engagement ring is a U.S. tradition that started in the early 1800s, during the art nouveau period," he said. It was the strong influence of and promotion by American diamond dealers that led to its prominence as the gemstone of choice for engaged couples.

Interestingly, since the early 1800s the metal color of engagement rings has changed generationally, going back and forth between yellow and white gold or other metal.

"In the bridal market, it's been shown that engaged young women don't want the same color (of metal for their engagement rings) that their mothers have. In the 1960s, the trend was for yellow; in the '70s it was white; in the '80s, yellow; in the mid-'90s it changed back to white; and since the early 2000s it's been yellow."

Today's young couples, however, are broadening their tastes, with much larger visions of ideas for their ring style.

Beckham's advice? Do your homework before you go to a store.

BECOME AN EDUCATED BUYER

Beckham encourages couples in the market for an engagement ring to put some research into their many options, in order to make "educated decisions" when it comes to jewelry purchases.

"Younger couples are not interested in brand names," he said. "What inspires them is putting their own touch into the design of an engagement ring, to create one that tells their own story."

As a designer, it's very important that I ask them a lot of questions to help me understand what is important to them so I can translate it into what they want. I listen very well."

KNOW THE FOUR CS OF DIAMONDS

If the chosen stone for the ring will be a diamond, Beckham suggests that becoming familiar with the importance of its "Four Cs" before coming to a store can help couples make a wiser decision.

In brief, the Gemological Institute of America describes the four Cs below.

CUT – considered to be the most important element in buying a diamond, the cut can affect a diamonds' brilliance and fire. Precise workmanship of proportions, symmetry, and polish maximize its brightness.

CLARITY – this refers to the stone's relative absence of inclusions and blemishes that can be seen at a 10X magnification. The better the clarity, the higher the price.

CARAT WEIGHT – diamonds are sold by weight, and the more weight, the higher the cost. One carat is equal to 0.20 grams.

COLOR – The GIA's D-to-Z scale measures the colorlessness of a diamond, comparing it to master stones. The less color, the more brilliance the stone will have.

TIMELESS RING STYLES

Diamonds continue to be "king in the South," above all other engagement ring stones, says Beckham.

Vintage-inspired rings maintain their popularity, with couples sometimes wishing to use the same elements (stones, band color, etc.) from a family ring but put their own touches on it by changing it to a more modern setting style.

Three-stone rings with a larger stone in the center, often said to symbolize past, present and future, continue to be a classic look.

The eternity band, a ring composed of a 360-degree circle of identically cut gemstones (usually diamonds) on a precious metal setting, is also a favorite style. It can serve as an engagement ring or wedding band.

TODAY'S TRENDS

Precious metal options - Yellow gold is outpacing white gold as the metal color of choice, with rose gold gaining in popularity, as well.

ALTERNATIVE METALS – More and more couples are going with alternative metals or materials like titanium, tungsten, stainless steel, cobalt, ceramic, wood and many others.

Consider your partner's lifestyle when choosing or creating an engagement ring, For those who spend a lot of time outdoors, at the gym, working in a field that makes it difficult to wear certain styles, or has allergies, a high maintenance ring would not be a good choice.

TWISTED BANDS – Figural settings are on trend. "These are settings that look more 3-D, a more visual presentation, such as, of a vine, tree branch, rope or spikes," Beckham said.

COLORED STONES - "There are no rules these days. The ring represents what the couple wants it to represent, whatever the stone color, which is very personal. I've done engagement rings with sapphires, rubies, emeralds and opals."

STONE SHAPES – Trending now, in order of popularity after round stones (which are "always number one") are oval, pear, marquis, princess and heart shapes.

PAVE' – The use of a pave' setting adds instant sparkle to a ring by adding small diamonds along the band, on both sides of a larger center stone.

HALO – The halo setting features smaller accent stones that encircle a larger center stone, effectively making the ring look larger.

STACKING RINGS – This trend allows the wearer the opportunity to build a small collection of typically very thin rings that are meant to tell a couple's personal story. Beginning with the engagement, each additional ring may represent anniversaries, children or any milestones or events they wish.

SHOPPING LOCALLY – The idea of buying a specific national jewelry brand has given way to couples who prefer to talk to local jewelers for that extra touch of service, customization and a personal connection.

SUSTAINABLY MINED DIAMONDS OR OTHER GEMS – The gemstone industry has "gone to a 'no blood diamonds' stance and has "gone to great lengths" to change atrocities once connected to the industry. Today's young couples want to know that their purchase is not linked to a business once wrought with environmental damage, child labor, dangerous working conditions or violence.

LAB-GROWN DIAMONDS - A man-made, "greener" stone, these gems are visually, chemically and physically identical to earth-mined diamonds. The result is a more affordable and ethical "diamond" that retains its value over time.

BECKHAM BEST ADVICE: "Be flexible, do your research and enjoy the experience!"



ORGANIZATION

THE ULTIMATE LIFE HACK

For everyone from those well-intentioned diachards among us who insist on making new year's resolutions each year, to the newcomers just beginning to settle into their new homes in Madison County, most of us could agree that becoming a tad (or a lot) more organized is just a good idea.

What is it about the idea of managing all that stuff we own that attracts so many of us to long for the peace and calm of some clear space in our homes and offices?

Suzanne Lindsey, owner of Light House Organizer in Canton, has made her living for nearly five years helping hundreds of people get organized and stay that way.

Why are her services in so much demand now?

Lindsey has done her research.

Living in clutter and disorganization can “weigh you down,” she says, citing a fascinating UCLA study in 2012.

“The study was about the number of items people have in their homes and how it affects their lives. Ironically, the study found that our need to reward ourselves materially may actually increase our stress—at least for moms,” whose time constraints make it understandably difficult to sort, organize and manage their families' belongings.

The outcome of the study showed that the mere presence of excess possessions becomes a visible reminder of unaccomplished work, leading to a cycle that continuously challenges one's unmet intentions of keeping a tidy home—which only produces more stress.



Suzanne Lindsey and her Light House Organizer team, as they worked on organizing two closets at a home in the Wright's Mill neighborhood in Madison.



WHY HIRE AN EXPERT?

The beginning of a new year is a great time to tackle organization projects we've been avoiding for months but haven't mustered up the motivation to even get started. Lindsey suggests there are three main reasons people decide to go with a pro instead of diving into the project themselves:

ACCOUNTABILITY - "It is easy to brush aside a decluttering project that desperately needs to be done," she said. "I have had multiple clients say, 'I'm so glad you are here. I would have stopped by now!'"

TIME - "People just don't have the time to do it, maybe because of work, having small children, caring for elderly parents and many other reasons."

CIRCUMSTANCE - "They have a life circumstance that prevents them being able to complete it themselves. Maybe they are disabled, elderly, or sometimes because of anxiety or depression."

UNPACKING FOR NEWCOMERS

Folks who have made a recent move to a new home and city can also find it difficult to unpack everything they own as it sits in boxes all over their house.

Lindsey explains how her unpacking services can help ease their apprehensions.

"Where a moving company will unpack your belongings and remove the paper and boxes from the premises, we take it one step further by putting your items where they belong," right down to hanging pictures on the wall, she said.

"We make your new home functional from the start. We also have the knowledge to bring in the right organizing products. We have some clients who want just one or two rooms done and others who want the entire home. Whatever level of assistance you choose, it will help you feel settled in your new home that much sooner."

OBSTACLES TO DECLUTTERING

Because parting with things in our homes can be intimidating, time-consuming and emotional, Lindsey said there are several common hindrances that may stop many of us from beginning a declutter project.

"The biggest obstacle is probably overwhelm," Lindsey said. "When a person looks at all the stuff, they think about all the things they have to do during a declutter project, such as:

- Making decisions on what to do with everything
- Taking items for donation (which items, where, and when, arranging for pickups, etc.)
- Deciding how to sell some items (garage sale, social media, word of mouth)
- Taking your large pile of the garbage out
- Purchasing organizing products.

"They just shut down and it never gets done," she said.

TIPS TO STAY ORGANIZED

Fortunately, Lindsey offers some hints to stay motivated and organized once you've gone through the process of decluttering.

"After decluttering, you will want to organize what is left," she said. "Finding a home for everything is imperative. However, I want my clients to remember that just because an item has a home, doesn't mean it's permanent. You will live with it for a while, and you'll see small tweaks and changes that will make it even more efficient.

"Next, I encourage systems to keep it organized. For example:

- Sitting down on Sunday evenings to plan the week's schedule and menus, pay bills, etc. Popular time management expert and author Brian Tracy says that for every minute you spend planning, you save 10 minutes in execution. Try this – it works!
- Get your machines working for you in the morning (dishwasher, washing machine, etc.).
- Implement some "tidy time" every evening.
- Have a box or basket to collect things you no longer love, use or need.
- Every time you purchase something, put it away that day.

"These systems become habits that will turn into a visible difference."

ORGANIZATION: A REWARDING GOAL

Lindsey finds a continuing sense of purpose in her work through the results she helps make possible for frustrated clients who were able to change their homes, attitudes and lifestyles as a result.

"I remember working in my very first home of a non-friend or family member," she said. "I opened the first cabinet and was just struck with the reality that she trusted me enough to let me see 'behind the curtain.' I kept my composure, but I was so honored that I got to be a part of her life changing process.

"I have seen so many families finally be fed up with the clutter. Many of them were working with 30 years of accumulation. One client's mission was to have her kitchen table clear so she could keep a vase of flowers on it. Another client's desire was for her home to feel like a hotel. Each of these ladies accomplished their goal with our help."

She has also developed a MUGS system for those who are reluctant to let go of things they don't use, love or need, mostly because they think they may need it in the future.

Her MUGS method helps clients think through their decluttering processes.

She explained, "I use that acronym because just about everyone in America has too many MUGS!"

Do you?

Lindsey may be reached via her website at www.lighthouseorganizer.com or on Facebook at www.facebook.com/lighthouseorganizer



Suzanne Lindsey

Shayna's Lash Extensions

Say Goodbye to Mascara!



1st Time Special:
One **FREE** refill
with a full set.



707 Beau Pre' Dr. / Ste. A / Ridgeland, MS
(769) 300.2519 / www.shaynasboutique.com



Putting our independence to work for you

We're excited to announce that the Rusty Healy Agency has become a fully independent insurance agency. What does this mean for you? A wider range of insurance solutions to help protect what you value most. What hasn't changed? The trusted advice and personal service you count on, now and in the future.

LET'S TALK TODAY.

Rusty Healy
7738 Old Canton Rd
Madison, MS 39110
601-856-3681
www.rustyhealyinsurance.com



HOME | AUTO | BUSINESS

Products underwritten by Nationwide Mutual Insurance Company and Affiliated Companies. Not all Nationwide affiliated companies are mutual companies, and not all Nationwide members are insured by a mutual company. Subject to underwriting guidelines, review, and approval. Products and discounts not available to all persons in all states. Nationwide Investment Services Corporation, member FINRA. Home Office: One Nationwide Plaza, Columbus, OH. Nationwide, the Nationwide N and Eagle, and other marks displayed on this page are service marks of Nationwide Mutual Insurance Company, unless otherwise disclosed. © 2021 Nationwide. CPC-0660AO 15383609 (12/21)



BROOKS MOSLEY, CPA



BALLEW

WEALTH MANAGEMENT



SCOTT RIVES, CRPS

INVEST IN A REWARDING FUTURE.

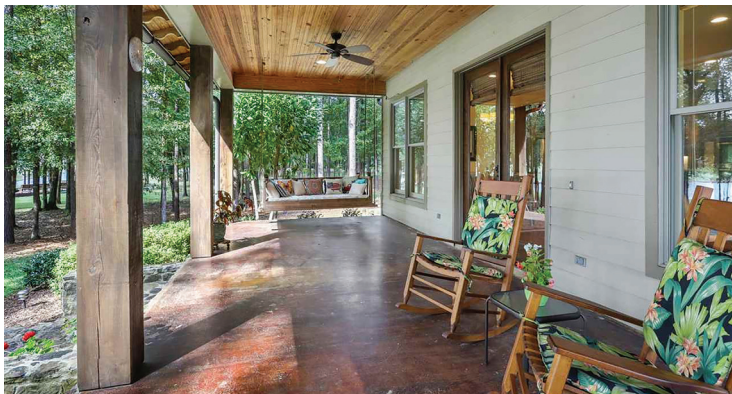
By knowing your financial goals, we devise a strategic plan that provides you with freedom to experience financial flexibility and a roadmap to a worry-free retirement.

We adjust your custom portfolio to navigate the numerous changes in life.

BALLEWWEALTH.COM THE DISTRICT 100 VISION DRIVE, SUITE 325, JACKSON, MS 601.368.3500



MADISON COUNTY
REALTY
SHOWCASE



THE RETREAT\$599,000
101 LAKESHORE COVE

RARE FIND

Rare Find! Overlooking the Lake! Approximately 5.8 Acres +/-! Farmhouse Style! Well Maintained! Loads of Natural Light! Open Concept Plan! Granite Counters! Eat at Bar! Pantry! Stainless Appliances! Gas Cooktop! Refrigerator! Double Ovens! Dining Area! Greatroom with Fireplace! Master Suite Down! Master Bath has a separate access to half bath so it can double for vanities! Laundry Room with Sink! Upstairs Loft or Bonus Room Area! Upstairs Secondary Suite and Hall Bath! Oversize Garage! Storage Space! Nestled amongst the Trees for Privacy! Front Porch for Relaxing! The Retreat is One Street inside Charlton Parke & Private Gated Area!



KENNEDY-REALESTATE.COM

JUANITA KENNEDY | KENNEDY & COMPANY REAL ESTATE, INC.
601-898-2999

JUANITA@KENNEDY-REALESTATE.COM



LAKE CAROLINE.....\$444,000
105 BEAUFORT CIRCLE

LUXURIOUS LIVING

You'll love this Luxurious French Acadian home with covered boat slip on the beautiful Lake Caroline. As you approach the entrance, you'll notice the doors have been refurbished and refinished and new beveled glass has been added. You'll also see that the door hardware and locks have been replaced as well as new hardware and locks on all the other outside doors. Head inside and you're greeted by updated beautiful, stylish carpet floors and an abundance of natural light in the spacious living/dining room, perfect for hosting large gatherings. With a spacious and well laid out floor plan - 9' and 10' ceilings and with crown molding through-out. Bricked gas fireplace with beautiful mantle flanked with bookshelves/TV cabinet. You'll take note of several updates that really embellish the beauty and enjoyment of this home: Two new top of the line Lenox heating and cooling systems (split plan) - one for the bedroom area and one for the living, dining, 4th bedroom/office and kitchen; A huge bookshelf addition - floor to ceiling; Plantation shutters at the dining and the patio areas; New ceramic sinks in all the bathrooms; A new Architectural life-time roof with new rotating attic exhaust fans. All exterior wood has been repaired or replaced and painted along with the garage doors. Enhancements were made to the gutters and the addition of leaf guards on all. And then there are the kitchen additions and updates: A wonderful new exhaust vent hood, a new 1200-watt Panasonic microwave. A new Frigidaire Gallery gas cook top. A beautiful new 12 candelabra lighting fixture. And a new fan and light fixture at the breakfast nook. Lots of cabinets and storage through-out. There are unique design granite tile counter tops, back-splashes, and a solid granite island top, plus a big walk-in pantry. Fans through-out. Two gas water heaters. Monitored "Simply Safe" security system is available. Large master bedroom with double box ceiling, can lights and fan. Adjacent master bath: 2 walk-in closets, double vanities, lots of storage, jet tub, separate commode, and shower. Beveled glass around mirrors and Corian counter tops at vanities. Big laundry room between master bedroom and the remaining 2 bedrooms: tile counter tops/floor, large sink, and more storage. Guest bedroom and bath off hall from kitchen. Remaining 2 bedrooms are similar all with carpet, fans, and closets. A Jack and Jill bath separates the 2 bedrooms with separate vanities, burnished bronze fixtures, tile counter tops/floors, tub / shower, and walk in closets. There is a Lovely partially covered patio with a soothing fountain and flower garden. A huge back yard, shy of an acre, with beautiful landscaping and a lighted concrete walkway leading to the boat-slip. (Lake down for construction project) Come and see for yourself the beautiful, interior designed color scheme and rich appointments - used quite extensively in very expensive homes. The neutral color "Windsor greige" is very pleasing and evokes real warmth and comfort unlike many that are totally white. You'll really like the quality, pristine look of this home.



POLLESPROPERTIES.COM

AMANDA POLLES | POLLES PROPERTIES
 601-278-6871; 601-898-3364
 AMANDA@POLLESPROPERTIES.COM





BRIDGEWATER.....\$645,000
111 CHERRY LAUREL LANE

ESTATE LIVING

A True Classic! Custom Built! Beautiful Setting! Well Maintained! Grand Two Story Marble Entry Foyer! Formal Dining Room! Rich Wood Paneled Study with Fireplace! Two Story Greatroom with Banks of Arched Windows and Gorgeous Hardwood Floors! All New Kitchen! Quartz Counters! Brand New Stainless Appliances and Gas Cooktop! Eat at Bar! Sunfilled Breakfast Room! Pantry! Home Office! Master and Guest Suite Down not pictured due to moving process! Master Suite with Fireplace! His and Her Vanities! Garden Tub and Separate Shower! Walk in Closet! Two Secondary Bedrooms up plus Bonus Room or 5th Bedroom! Fresh Paint Throughout and New Carpet! Gunite Pool! Covered Backporch! 3 Car Garage! Circular Driveway! 1.2 Acres +-! Sprinkler System! Neighborhood Pool, Clubhouse, and Tennis Courts, and Gated Community!



KENNEDY-REALESTATE.COM

JUANITA KENNEDY | KENNEDY & COMPANY REAL ESTATE, INC.
 601-898-2999

JUANITA@KENNEDY-REALESTATE.COM

Kids COVID Vaccines

Offered Monday - Friday
9am - 6pm

Schedule at trustcarekids.com



SWEET!
A lollipop with every shot

- Well-Child Visits
- After-Hours Care
- COVID Testing
- Sports Physicals
- Vaccinations
- X-Rays
- Behavioral Health
- Eye Screenings

Our Pediatricians Dr. Catherine Phillippi and Dr. Megan Washington have many years of experience caring for children. They bring a wealth of knowledge and expertise to TrustCare Kids.





101 Lexington Drive, Suite A | Gluckstadt, MS
Monday - Friday 8-8 | Saturday 9-5 | Sunday 1-7
trustcarekids.com 601-707-3771

Child of play



#WeRStR strichardschool.org

ALL AMERICAN MADE ALL AMERICAN MADE ALL AMERICAN MADE

THE SHOPKEEP CO.



418 E. CAPITOL STREET JACKSON, MS WWW.THESHOPKEEPCO.COM

ALL AMERICAN MADE ALL AMERICAN MADE ALL AMERICAN MADE

Named
SAFEST
CITY
by Safewise

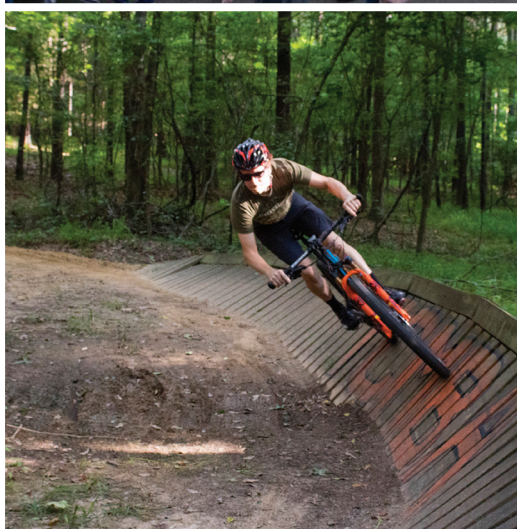


MOST
SUCCESSFUL
CITY *by Zippia*

Madison
the city



www.MadisontheCity.com



2022 NEWCOMER'S GUIDE

NEWCOMER'S

Population 25,617 **MADISON** www.madisonthecity.com



Population - 23,898 **RIDGELAND** www.ridgelandms.org



GUIDE



Population - 107,520 **MADISON COUNTY**

www.madison-co.com

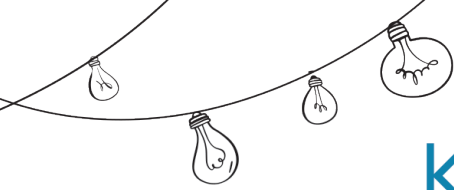


Population 11,896 **CANTON** www.cityofcantons.com



Population - 1,882 **FLORA** www.florams.com

Madison County is one of the fastest-growing counties in the state of Mississippi, with widespread commercial and residential growth.



You Belong **Here**

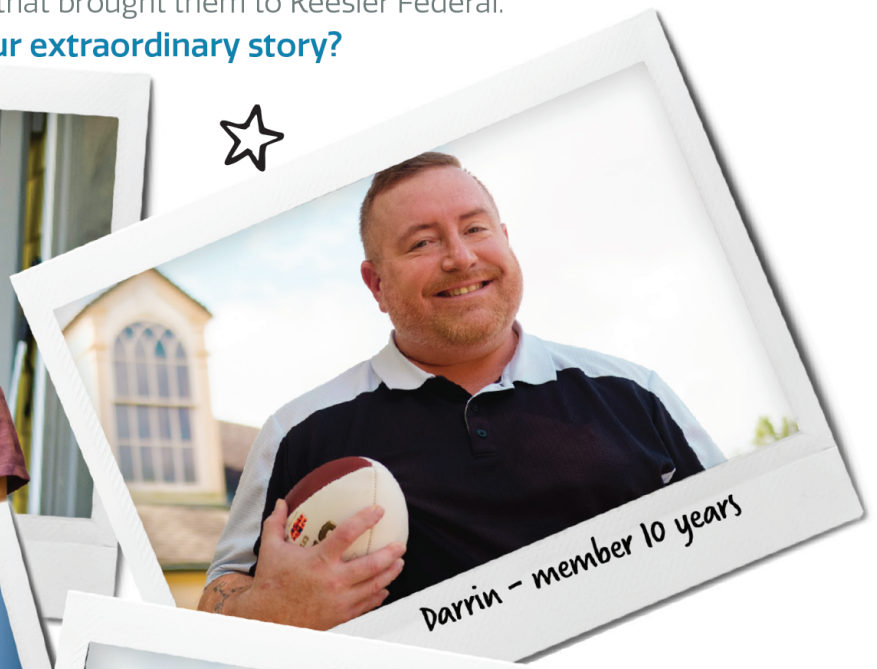
Extraordinary members. Extraordinary stories.

Our members come from all walks of life, and each one has a unique story that brought them to Keesler Federal.

What's your extraordinary story?



Raquel - member 20 years



Darrin - member 10 years



Jeremy - member 20 years



Courtney - lifelong member



Scan here for more stories

Tell us your story. [kfcu.org/stories](https://www.kfcu.org/stories)

Federally insured by NCUA Membership eligibility required.

Your nearest branch:
Madison Welch Farms
1944 Main Street, Madison

MADISON COUNTY



In 1828, nine years after Mississippi was admitted into the United States, Madison County was established as Mississippi's 23rd county. Named after President James Madison, this county has a rich legacy of community living, economic development, and natural beauty. To this day, Madison County is still one of the most robust and lively places to live in Mississippi.

With a population of approximately 107,000, Madison County remains one of the fastest-growing counties in the state. Home to over 20 public schools and a dozen

private/parochial schools, Madison County is known for its excellence in academic achievements.

Supported by various Chambers of Commerce and the Madison County Business League & Foundation, Madison County provides an excellent atmosphere to raise a family and build a community.

While maintaining a boisterous social calendar, Madison County is one of the largest economic powerhouses in Mississippi. Shopping centers such as Renaissance at Colony Park, Township and Colony Park,

Northpark, Grandview, and Colony Crossing provide both job opportunities as well as excellent shopping opportunities for Madison County residents and visitors.

Madison County is also home to one of the largest automotive plants in North America with the Nissan Canton Automotive Plant. In addition, Amazon announced in 2020 plans to invest millions in a new warehouse in the county opening in early 2022.



NOT YOUR AVERAGE JOE

**CALL OUR ADVANCEMENT DIRECTOR,
TRICIA HARRIS, TO SCHEDULE A TOUR
FOR YOUR FAMILY: 601-898-4803**

**308 NEW MANNSDALE RD
MADISON, MS
WWW.STJOEBRUINS.COM**



MADISON



Much like the county, the City of Madison was named for President James Madison. Originally a small railroad junction in 1856, Madison has since developed into some of Mississippi's most increasingly valuable real estate. With a population of approximately 27,747 and growing steadily, Madison is a flourishing city. Thanks to a boom of population growth in the '90s, the city limits of Madison were expanded in the late 2000s. Madison is known for its uniform commercial architecture, which gives the city a beautifully unique look. Madison continues to see economic and commercial growth as new businesses steadily move to the city. With expanding shopping centers such as Grandview Drive, Colony Crossing, and the Old Madison Station District, Madison continues to see growth and revenue. In fact, Madison has the highest rate of income for cities in Mississippi. High-performing schools like Madison Central High School and lovely public spaces for families and youth like Liberty Park make Madison one of the best, family-friendly and safest locations to raise a family in the state of Mississippi. Madison was recognized as Mississippi's safest city in 2018, 2019, 2020 and 2021.

CITY HALL | 1004 Madison Avenue • Madison, MS 39110 • (601) 856-7116 MAYOR | Mary Hawkins Butler POLICE DEPARTMENT | (601) 856-6111
FIRE DEPARTMENT HEADQUARTERS | (601) 853-2552 MADISON PUBLIC LIBRARY | (601) 856-2749 PARKS & RECREATION | (601) 853-9109
PUBLIC WORKS DEPARTMENT | (601) 856-8953 MADISON THE CITY ECONOMIC DEVELOPMENT | (601) 856-7060

RIDGELAND

Though once a simple farm town that specialized in strawberries and pears, Ridgeland's socio-economic base has shifted to a thriving suburban area within the last 200 years while still maintaining its naturalistic charm. Ridgeland boasts one of the fastest-growing areas in Mississippi, proving a bustling home to various shopping centers, restaurants, and attractions. C Spire Wireless, sixth largest wireless provider in the United States, is based in Ridgeland. New ventures arrive every day. Commercial hubs like The Renaissance at Colony Park, Northpark Mall, and the Township will meet any shopping needs, whether you are looking for clothing, food, books, or electronics. Ridgeland is also home to various thriving restaurants. Biaggi's fills the stomach looking for Italian, the Cock of the Walk is everyone's destination for good fried catfish, and Trace Grill makes the best burgers in town. Like spending time outdoors? Ridgeland is famous for its efforts to create a biker-friendly town where multi-use and bike trails wind through the city and the Natchez Trace. If you're looking for recreational parks and various outdoor attractions, Ridgeland has those too. Spend your weekends biking down the Natchez Trace or take your boat out on the Ross Barnett Reservoir, where yearly fun-filled family events like Pepsi Pops take place. Ridgeland is also home to the Mississippi Craft Center, which was named the 2010 Travel Attraction of the Year by Mississippi Tourism Association. With a population approaching 25,000, Ridgeland is one of the most thriving cities in all of Mississippi.



RIDGELAND CITY HALL | 304 Highway 51 • Ridgeland, MS 39157 • (601) 856-7113 MAYOR | Gene McGee POLICE DEPARTMENT | (601) 856-2121
FIRE DEPARTMENT HEADQUARTERS | (601) 856-7004 RIDGELAND PUBLIC LIBRARY | (601) 856-4536 PARKS & RECREATION | (601) 853-2011
PUBLIC WORKS DEPARTMENT | (601) 853-2027 RIDGELAND CHAMBER OF COMMERCE | (601) 991-9996



PROUDLY SERVING
Fresh Gulf Seafood

471 RAILROAD AVENUE FLORA, MISSISSIPPI | (601) 879-7296
Wednesday & Thursday 3 p.m. - 9 p.m. | Friday 3 p.m. - 10 p.m. | Saturday 3 p.m. - 10 p.m. | Sunday 3 p.m. - 9 p.m.

J.S. Iupe's
25th ANNIVERSARY

**corporate promo
team uniforms
fan gear
custom solutions**

WWW.JSIUPES.COM | 601-856-7776 | 101 VILLAGE BLVD, SUITE D, MADISON, MS

CANTON



If you have been to Canton, you know it holds a Southern grace that few towns can mimic. Many films have tried to capture its aesthetic on camera, like “My Dog Skip,” “A Time to Kill,” and “O Brother Where Art Thou”. While Hollywood stars come to Canton to film their masterpieces, Canton is locally known as the county seat of Madison County. Also known for its traditional Georgian architecture, much of Canton has been listed on the National Register for Historic Places. During the Civil War, Canton saw many Confederate wounded and thusly has a notable Confederate cemetery. Another historical monument from the past is the Canton Courthouse, which survived the Civil War intact. Built in 1838, the Canton Courthouse is one of the only pre-Civil War courthouses still in operation. Today, Canton is a picturesque city with traditions that pull people from all over, such as the bi-annual Canton Flea Market. Held on the second Thursday in May and October. Canton’s Flea Market is renowned within the South. Another event for which Canton is well-known is its Victorian Christmas Festival. Canton Square is lit up with Christmas lights, blow-up Santas, and carolers from miles around. Shops sell hot chocolate to the crowds and horse-drawn carriages carry children and adults alike through the glittering festivities. Canton is where you can find history, modernity, and festivities all under the same magnolia trees.

CITY HALL 226 East Peace Street • Canton, MS 39046 • (601) 859-4331 MAYOR | Dr. William Truly POLICE DEPARTMENT | (601) 859-2121
FIRE DEPARTMENT HEADQUARTERS | (601) 859-3112 CANTON PUBLIC LIBRARY | (601) 859-3202 PARKS & RECREATION | (601) 859-4358
PUBLIC WORKS DEPARTMENT | (601) 859-3245 CANTON CHAMBER OF COMMERCE | (601) 407-6166

FLORA

Named after former resident Flora Mann Jones, Flora is a small municipality in Madison County and is one of the nicest areas to visit if you are looking for a quiet getaway. With a population of around 2,000 people, Flora is the embodiment of the small charming hospitable Southern town. Home to the Mississippi Petrified Forest, Flora is a must visit for nature lovers. Complete with a Nature Trail, Museum, Gem Fume, Pavilion and Gift Shop, the Mississippi Petrified Forest is an excellent educational experience of a natural wonder. Take a hike among prehistoric stone logs, or walk through the museum where you’ll find fascinating facts about Mississippi’s landscape. Flora offers a unique natural experience unlike anything else in the state. The authentic hometown Mississippi ambiance continues with new restaurants like Main Street Café, Bill’s Creole and Steakhouse, and the Blue Rooster. Home to the metro area’s first hydroponic farm, Salad Days farm grows fresh lettuce, tomatoes, and produce year round. Primos Hunting Calls, headquartered in Flora, is a business that makes and ships a plethora of hunting calls worldwide. Flora is the outdoorsman’s paradise. Whether you are there for a lazy afternoon or are a full-time resident, Flora offers an escape from the frantic urban sprawl of the greater Jackson area and welcomes you to step outside and enjoy quaint living.



CITY HALL 168 Carter St. • Flora, MS 39071 • (601) 879-8686 MAYOR | Les Childress POLICE DEPARTMENT | (601) 879-8686
FIRE DEPARTMENT HEADQUARTERS | (601) 879-9292 FLORA PUBLIC LIBRARY | (601) 879-8835 PARKS & RECREATION | (601) 879-8686
PUBLIC WORKS DEPARTMENT | (601) 879-8686 FLORA CHAMBER OF COMMERCE | (601) 879-9376

OUT & ABOUT

CANTON MOVIE MUSEUM:

Revisit the thrilling and astonishing moments from unforgettable films like “A Time to Kill” and “My Dog Skip” in this Hollywood-esque experience. Be sure to make an appointment with Canton Tourism before you go!

ROSS BARNETT RESERVOIR:

Looking for fun on the water? The Reservoir, named for Governor Ross R. Barnett, has boats, picnics, disk golf and the Cock of the Walk for your enjoyment.

MISSISSIPPI PETRIFIED FOREST:

A National Natural Landmark, the Petrified Forest is Flora’s collection of petrified logs or “stone giants” created over hundreds of years and viewable for anyone looking to step outside and learn about Mississippi’s natural history.

NATCHEZ TRACE PARKWAY:

Running from Natchez to Nashville, this road was once a path travelled by Native Americans and fur traders — now it provides a scenic drive through magnificent trees. Trails for bikers and joggers accompany the road, making it an all-access trip.

MISSISSIPPI SPORTS HALL OF FAME:

This hall of fame celebrates the many accomplished athletes who call Mississippi home. From basketball and football to golf, professional and local, this museum covers them all.

MISSISSIPPI CRAFT CENTER:

The Craftsmen Guild of Mississippi has brought an appreciation of regional crafts to Madison County through the Craft Center, working to preserve, promote, market, educate, and encourage local artistry.

JACKSON ZOO:

Looking for outdoor fun? Look no further than the Jackson Zoo, where giraffes, otters, cougars, snakes and other wild animals thrive. Take a walk through the jungle to see the monkeys or step inside to view the reptiles. The Jackson Zoo brings you wild animal fun while also providing education on wildlife conservation and care.



MISSISSIPPI CHILDREN'S MUSEUM:

One of the newest attractions to join this list is the Children's Museum, where children have 20,000 square feet of educational and interactive features and games to keep them entertained.

EUDORA WELTY HOUSE & GARDENS:

The famous Mississippian author's home is a step back into the world of Eudora Welty's beloved books. This National Historic Landmark provides you with a glimpse of what Eudora Welty's life was like as well as the chance to stroll through her picturesque gardens.

TWO MISSISSIPPI MUSEUMS:

Jackson's newest museums opened in December 2017 and include The Museum of Mississippi History and the Mississippi Civil Rights Museum. The interconnected museums will take visitors through the sweep of Mississippi history and the state's role as ground zero in the U.S. Civil Rights Movement.





CAN'T MISS EVENTS



APRIL 9, 2022

Township Jazz Fest brings the unpredictable sounds of piano and brass to Highland Colony Parkway at The Township. The event draws thousands of people to Ridgeland for good music in an outdoor environment.

MAY 12 AND OCTOBER 13, 2022

The Canton Flea Market is one of the largest and most-attended in the southeast. Held the second Thursday of May and October, thousands descend upon the historic Canton Square for shopping.

MAY 6, 7, 8 2022

Renaissance Fine Arts Festival and Sante South Wine Fest are a combination of events occurring at Renaissance at Colony Park to make for one amazing weekend in the spring. Stop by for some of the best sights, sounds, and tastes the metro has to offer.

APRIL 8TH - 9TH 2022

St. Andrew's Episcopal School hosts **Arts on the Green** for a two-day, fun-filled event where some of the state's most creative artists display and discuss their creations.

MAY 6, 2022

Pepsi Pops is a family favorite that takes place each year in the Ross Barnett Reservoir. The Mississippi Symphony Orchestra wows crowds of picnic-goers.

MAY 7, 2022

The Natchez Trace Century Ride brings together over 700 cyclists to jumpstart the cycling season along the Natchez Trace parkway.

JUNE 30-JULY 3, 2022

The Championship Hot Air Balloon Fest is held each summer with events in Ridgeland and Canton. In Ridgeland, the annual Balloon Glow is held at Northpark Mall with a live concert performing for crowds. In Canton, watch as the balloons race across the sky.

SEPTEMBER 25TH, 2022

Gluckstadt Germanfest, held annually the last Sunday in September, has become a fall tradition in Madison County as many make their way to the "Lucky City" and St. Joseph Catholic Church for a day of beer, brats, and fellowship at an authentic German event.

OCT. 21-22ND, 2022

The Scarecrow Cruiser and Car Show brings classic cruisers together in downtown Madison for a weekend full of family fun. Stop by and look at fast car, classics, scarecrows and more.

NOVEMBER 2ND - 5TH, 2022

Make plans to stop by **Mistletoe Marketplace** for some of your Christmas shopping in 2022. Hosted by the Junior League of Jackson, this fundraiser attracts thousands across the state for a weekend of shopping and fellowship.

**NOVEMBER 25TH -
DECEMBER 23, 2022**

Beginning the day after Thanksgiving in November and ending in Dec. 23 each year, don't miss seeing why Canton is called the City of Lights. Visit historic downtown Canton for its annual **Christmas Festival**.

PUBLIC SCHOOLS

Madison County is home to two public school districts. The Madison County School District is one of the fastest-growing, top-rated districts in the state. With more than 13,000 students, it is the fifth-largest school district in the state of Mississippi. Madison County Schools district is one of the highest-scoring county school districts in Mississippi to achieve an “A” rating based on the statewide accountability model.

Their motto is “Madison County Schools: Mark of Excellence!” They are strongly committed to offering a challenging education, and that commitment is very evident in the programs and opportunities available to our children. Their goal is not only to help each child reach his or her fullest potential but also for each child to excel. They strive to maintain open lines of communication between our district and the public we serve.

The Superintendent of the Madison County School District is Charlotte Seals.

Madison County is home to two pub-

lic school districts. The Madison County School District is one of the fastest-growing, top-rated districts in the state. With more than 13,000 students, it is the fifth-largest school district in the state of Mississippi. Madison County Schools is one of the highest-scoring county school districts in Mississippi to achieve an “A” rating based on the statewide accountability model.

Their motto is “Madison County Schools: Mark of Excellence!” They are strongly committed to offering a challenging education, and that commitment is very evident in the programs and opportunities available to our children. Their goal is not only to help each child reach his or her fullest potential but also for each child to excel. They strive to maintain open lines of communication between our district and the public we serve.

The Superintendent of the Madison County School District is Charlotte Seals.

The Canton Public School District embodies a tradition of academic excellence, which drives the success of each of its more

than 3,500 students. The mission of the Canton Public School District, with the full participation of parents and the community, is to enable all students to become analytical thinkers, self-directed lifelong learners, and effective communicators. The district’s goal is to prepare students to continue their education and/or to enter the global workplace and to participate in society as responsible citizens. Recognizing that children are the community’s greatest asset and value, the district invites parents and the community to join with schools in serving as a perpetual bridge for the development of students’ character. Further, the district believes it takes all parties working together toward the enhancement of students’ ability to master data, interpret knowledge, and apply the practical principles of their mastery. Canton Public School District leaders fulfill the district’s mission of “Elevating Minds and Empowering Possibilities” by working together. “Together Tigers Win!”

The Superintendent of the Canton Public School District is Gary P. Hannah.



MADISON PUBLIC SCHOOLS

HIGH SCHOOLS:

MADISON CENTRAL HIGH SCHOOL
1417 Highland Colony Parkway
Madison, MS 39110 (601) 856-7121 Principal
Sean Brewer

GERMANTOWN HIGH SCHOOL
200 Calhoun Parkway
Madison, MS 39110
(601) 859-6150
Principal Dr. Wesley Quick

RIDGELAND HIGH SCHOOL
586 Sunnybrook Road
Ridgeland, MS 39157
(601) 898-5023
Principal Keith Fennell

VELMA JACKSON HIGH SCHOOL
2000 Loring Road
Camden, MS 39045 (601) 468-2531 Principal
Brendon Bell

NINTH GRADE:

ROSA SCOTT
200 Crawford Street
Madison, MS 39110
(601) 605-0054
Principal Brent Cofield

MIDDLE SCHOOLS:

GERMANTOWN MIDDLE SCHOOL
202 Calhoun Parkway
Madison, MS 39110
(601) 859-0376
Principal Chris Perritt

SHIRLEY D. SIMMONS MIDDLE SCHOOL
820 Sulphur Springs Road
Canton, MS 39046
(601) 855-2406
Principal Kelvin Griffin

MADISON MIDDLE SCHOOL
1365 Mannsdale Road
Madison, MS 39110
(601) 605-4171 Principal Leatha Phillips

OLD TOWN MIDDLE SCHOOL
210 Sunnybrook Road
Ridgeland, MS 39157
(601) 898-8730
Principal Crystal Chase

ELEMENTARY SCHOOLS:

CAMDEN ELEMENTARY
4784 Hwy 43 North
Camden, MS 39045
(662) 468-2833
Principal Dr. Fannie Green

EAST FLORA ELEMENTARY
759 Hwy 22 East
Flora, MS 39045
601-879-8724 Principal Dr. Capucine Robinson

HIGHLAND ELEMENTARY
330 Brame Road
Ridgeland, MS 39157
(601) 853-8103 Principal Serenity Luckett

MADISON STATION ELEMENTARY
261 Reunion Parkway
Madison, MS 39110
(601) 856-6246 Principal Martha Hanna

MADISON CROSSING SCHOOL
300 Yandell Road
Canton, MS 39046 (601) 898-7710 Principal Terri
Thornton

MANNSDALE ELEMENTARY
443 Mannsdale Road
Madison, MS 39110 (601) 879-0309 Principal Dr.
Emily Mulhollen

MANNSDALE UPPER ELEMENTARY
371 Mannsdale Road
Madison, MS 39110 (601) 879-3433 Principal
Debra Houghton

ANN SMITH ELEMENTARY
306 Pear Orchard Drive
Ridgeland, MS 39157
(601) 856-6621 Principal Karen Harness

MADISON AVENUE ELEMENTARY
1199 Madison Avenue
Madison, MS 39110 (601) 856-2951 Principal Dr.
Melissa Philley

MADISON AVENUE UPPER ELEMENTARY
1209 Madison Avenue
Madison, MS 39110 (601) 856-6609
Principal Dr. Kim Brewer

LUTHER BRANSON ELEMENTARY
3903 Hwy 16 East
Canton, MS 39046
(601) 859-2743
Principal Jessica Smith

OTHER:

**MADISON CAREER & TECHNICAL CEN-
TER** 1633 West Peace Street Canton, MS 39054
601-859-6847
Principal Blaise King

ACADEMIC OPTIONS CENTER
1633 West Peace Street
Canton, MS 39045
(601) 859-0367
Principal Brendon Bell

CANTON PUBLIC SCHOOLS

HIGH SCHOOLS

CANTON HIGH SCHOOL
634 Finney Road
Canton, MS 39046 (601) 859-5325 Principal Dr.
Pamela Self

NINTH GRADE:

CANTON NINTH GRADE ACADEMY
634 Finney Rd Canton, MS 39046 (601) 859-
3866 Principal Kari Johnson

MIDDLE SCHOOL

HUEY L. PORTER MIDDLE SCHOOL
551 Finney Road
Canton, MS 39046
(601) 407-1820
Principal Henry Doyle

NICHOLS MIDDLE SCHOOL
529 N. Mace Street
Canton, MS 39046
(601) 859-3741
Principal Dr. Chuonna Anderson

ELEMENTARY

CANTON ELEMENTARY SCHOOL
740 East Academy Street
Canton, MS 39046 (601) 859-2400 Principal Sha-
londia Washington

GOODLOE ELEMENTARY SCHOOL
551 Finney Road Canton, MS 39046 (601) 407-
1809 Principal Dr. Monique Lastique

MCNEAL ELEMENTARY SCHOOL
364 Martin Luther King Drive
Canton, MS 39046 (601) 850-3654 Principal Dr.
Shannon Whitehead

**REUBEN B. MYERS CANTON SCHOOL
OF ARTS & SCIENCES 357 OLD YAZOO**
Road Canton, MS 39046
(601) 855-7819
Principal Alpha Myers

OTHER

CANTON CAREER CENTER
487 N. Union Extension
Canton, MS 39046
(601) 859-3984 Director Michael Ellis

**CANTON EDUCATIONAL SERVICES CEN-
TER** 529 mace Street
Canton, MS 39046
(601) 859-5010 Principal Koche Anderson



YOUR **HEART** IS IN THE RIGHT PLACE.

**THEY SAY HOME IS WHERE THE HEART IS,
SO WE PROVIDE HEART CARE CLOSE TO HOME.**

Our team of heart specialists are here for your routine and preventive cardiac care through lifestyle support, minimally invasive treatments and in emergent situations.

When you put your heart in our hands, you get the benefit of skilled, experienced cardiovascular specialists and Merit Health Heart's collaborative approach to care.

To learn more, visit [MeritHealthHeart.com](https://www.MeritHealthHeart.com)



If you are experiencing a medical emergency, call 911.

PRIVATE & PAROCHIAL SCHOOLS



MADISON RIDGELAND ACADEMY:

This college preparatory school was founded in 1969 and is one of the highest performing schools within the Mississippi Association of Independent Schools. It is a devoted Christian Institution. The school may have 1,390 students in grades K3-12th, but it boasts a student-to-faculty ratio of 9:1. It is a 6A school with multiple championship teams in boys' football, basketball, track, archery, swim, girls' cross country, and varsity dance.

Termie Land | **Head of School**
Greg Self | **High School Principal / Associate Head of School**

7601 Old Canton Road | Madison, Mississippi 39110 | (601) 856-4455



ST. ANDREW'S EPISCOPAL SCHOOL:

With the Foundations to 4th-grade campus located on Old Canton Road in Jackson and the 5th through 12th-grade campus on Old Agency Road in Ridgeland, St. Andrew's is seemingly in two places at once. This College Preparatory School was established in 1947 and boasts the highest number of AP Scholars in the entire state. Through recent capital campaigns, it continuously builds up its campuses to best provide for its current and future generation of students. Recent additions include an Early Childhood Center, Athletics and Recreation Center, Chapel, and newly renovated classrooms on both campuses.

Kevin Lewis | **Head of School**

South Campus Foundations to Grade 4
4120 Old Canton Road | Jackson, Mississippi 39216 | (601) 987-9300

North Campus Grades 5 to 12
370 Old Agency Road | Ridgeland, Mississippi 39157 | (601) 853-6000



ST. JOSEPH CATHOLIC SCHOOL:

St. Joseph Catholic School offers a college preparatory curriculum to a diverse community of students in grades 7-12, committed to academic excellence and the values taught by Jesus Christ. We offer 20 varsity sports, a top-notch fine arts program, and boast the only high school on-campus radio station in the Jackson area. We are proud to have multiple teachers who have been honored with national awards of excellence. Founded in 1870 by the Sisters of Mercy, Saint Joseph is the only Catholic secondary school serving the Jackson metro area. For more information, call 601-898-4800 or visit www.stjoebruins.com. Catch the spirit at St. Joe!

Dena Kinsey | **Principal**

308 New Mannsdale Road | Madison, Mississippi 39110 | (601) 898-4800



ST. ANTHONY CATHOLIC SCHOOL:

St. Anthony, established in 2009, serves approximately 250 students in Pre-K4 through 6th grades. STEM activities are enhanced by integration of the arts and religion to create our unique STREAM Program. Arts are viewed as a vehicle for creative thinking and problem-solving as well as having intrinsic value on their own. Students are inspired to be critical thinkers, innovative problem-solvers, and effective communicators. Spiritual growth is emphasized, and students are encouraged to put their knowledge and talents to use in service to others.

Anne Cowger | **Principal**

1585 New Mannsdale Road | Madison, Mississippi 39110 | (601) 607-7054

If you've got it,
we protect it.



We have you covered with a full spectrum of quality personal and business solutions.

SPECIALIZING IN AUTO, HOME, AND BUSINESS INSURANCE

Steele Dehmer
Dehmer Insurance

601-624-7833
steele@dehmerinsurance.com
www.dehmerinsurance.com



RENAISSANCE CINEMA GRILL
RENAISSANCE AT COLONY PARK
RIDGELAND, MS

Boutique Theatre
With Intimate
Auditoriums
Featuring Luxury
Reserved
Recliner Seating
Premier Selection of
Local Brews &
Specialty Cocktails
Conveniently
Located Within
Ridgeland's Premier
Upscale Shopping
Experience

CHECK MALCO.COM OR THE MALCO APP TO VIEW THE CURRENT SCHEDULE

[f](#) [t](#) @MALCOTHEATRES / @MALCOTHEATRES1915 [i](#)

Malco
MARQUEE REWARDS
EARN. REDEEM. REPEAT.

RELAX ^{and} RECLINE
LUXURY RESERVED RECLINER SEATING

I LOVE TUESDAYS
CHECK OUT MALCO'S TUESDAY TICKET PRIZES!
Available For A Limited Time Only At Participating Locations

Malco
SELECT

Luxury Reserved
Recliner Seating

Dolby Digital
Presentations

Conveniently
Located off
Interstate 55
at Exit 107/
Grandview Blvd



The Only Mississippi
IMAX
GRANDVIEW CINEMA & IMAX
THE FORUM AT GRANDVIEW
MADISON, MS



**CLUB  PILATES
RENAISSANCE**

Try a Free Intro Class

A CLASS FOR EVERY BODY

From high-intensity to recovery and mobility - no matter your age or fitness level, there's a Club Pilates class for you.

**TONE · STRENGTH
MOBILITY · BALANCE**



601-427-5124
1000 Highland Colony Parkway, Suite 6005 (Renaissance)
www.clubpilates.com/renaissance



ST. RICHARD CATHOLIC SCHOOL:

St. Richard Catholic School was established in 1953 and is a feeder elementary school for St. Joseph in Madison. It has about 334 students from grades PK-3 to 6th grade and is directly connected to St. Richard Catholic Church, one of the largest Catholic churches in the metro Jackson area. The school is right off I-55 South in Jackson, close to Fondren and even closer to Highland Village. The school provides academically challenges courses in a safe, Catholic environment.

Jennifer David | **Principal**

100 Holly Drive | Jackson, Mississippi 39206 | (601) 366-1157



CHRIST COVENANT SCHOOL:

This Presbyterian School was formed in 2002, branching off Pear Orchard Presbyterian Church. It has 395 students from grades PK through 8th grade and a 20:1 student-teacher ratio. They are part of the Mississippi Association for Independent Schools and have devoted athletic and spiritually centered academic programs. It has been committed to excellence and Christ for the last 20 years and will continue to do so in the future. It will also be expanding in the fall of 2023 to include 9th-12th grade.

Cathy Haynie | **Head of School**

752 South Pear Orchard Street | Ridgeland, Mississippi 39157 | (601) 978-2272



JACKSON ACADEMY:

Located on Ridgewood Road in Jackson, Jackson Academy is centrally located in the metropolitan area to provide convenient access for families living in Madison, Rankin, Hinds and adjoining counties. Established in 1959 as a school designed to teach accelerated learning and reading by phonics, JA is now one of Mississippi's largest independent schools, serving more than 1,200 students from grades K3-12. This college preparatory school not only provides an academically challenging curriculum but premier sports programs as a part of the Mississippi Association for Independent Schools. The JA experience combines top-level academics and all-around character development to shape well-rounded people with bright minds and good hearts.

Palmer Kennedy | **Head of School**

4908 Ridgewood Road | Jackson, Mississippi 39211 | (601) 362-9676



JACKSON PREPARATORY SCHOOL:

This school serves grades 5-12 is the Jackson-metro premier preparatory school. Since its establishment in 1970, it has produced the most National Merit Semifinalists of any school in the state of Mississippi — public or private. Touting a championship athletic tradition, award-winning visual and performing arts, and academic excellence, students at Jackson Prep graduate with a well-rounded experience that has prepared them for success at the college level. 95% of our seniors attract merit-based scholarships, and 100% matriculate to colleges and universities throughout the world. Our keystone college counseling program's motto is "you can go anywhere from here." Jackson Prep has plans for expansion to all elementary grades in Fall 2023.

Lawrence M. Coco | **Head of School**

3100 Lakeland Drive | Flowood, Mississippi 39232 | (601) 939-8611



FIRST PRESBYTERIAN DAY SCHOOL:

FPDS is located in the heart of Jackson and was opened in 1965 by the First Presbyterian Church of Jackson. This school provides a Christian education to its approximately 650 students from K3 to sixth grade. FPDS is accredited by the Mississippi Association of Independent Schools and the Southern Association of Independent Schools. The mission of First Presbyterian Day School is to plant seeds of Christlikeness, pursue academic excellence, and to prepare hearts for future service in their homes, churches, and professions.

Brian T. Smith | **Head of School**

1390 N. State Street | Jackson, Mississippi 39202 | (601) 355-1731



CANTON ACADEMY:

Canton Academy is an independent Christian school located just a step away from the hustle and bustle of the Jackson metro area, hailed for years as Madison County's "hidden gem." CA, a few minutes north of Madison, takes pride in its family atmosphere and low student-teacher ratio. Aside from well-known and respected athletic programs, Canton Academy offers weekly chapel programs (K3-12th), a stellar elementary music program, sought-after high school Life Skills class, top-notch art instruction, and a traditional learning environment unmatched in today's schools. Canton Academy is accredited by the Mississippi Association for Independent Schools (MAIS) and is considered a "best value" among area independent schools.

Tripp McCarty | **Head of School, Alumnus (Class of 1995)**

1 Nancy Drive | Canton, Mississippi 39046 | (601) 859-5231



TRI-COUNTY ACADEMY:

This school was established in 1970 and provides instruction to students in PK3 through 12th grade. It utilizes the BJU program. There are courses on the Bible, accounting, sociology, speech and creative writing, which all help to provide a foundation education on a collegians level. They also have strong athletics, with a baseball team that won the 2A state championship in 2016 and won softball and football championships in 2021.

Dr. Tom Taylor | **Headmaster**

400 Cox Ferry Road | Flora, Mississippi 39071 | (601) 879-8517



THE MONTESSORI ACADEMY OF JACKSON:

Established in 2013, this school hopes your child will begin their educational journey where purposeful learning ignites a lifelong passion for knowledge. With grades PK through 6th grade, the school has roughly 30 students. The school believes that every individual is born with not only the desire to learn but also unlimited potential. The Montessori Academy is an inclusive, joyful community that fosters self-discovery. It inspires children to embrace and challenge the world with compassion, resilience, and courage.

Joyce Moxley | **Head of School**

1525 Lelia Drive | Jackson, Mississippi 39216 | (601) 345-1431



Serving Jackson Over 27 Years
GATHER. RELAX. SAVOR.



Highland Village, Jackson MS | 601.982.8111 | bravobuzz.com



Baking Daily Since 1998
BAKED FRESH, BY HAND EVERY DAY!



Banner Hall, Jackson MS | 601.362.2900 | broadstbakery.com



Serving Authentic New York Pizza Since 2007
A SLICE OF THE BIG APPLE IN JACKSON AND MADISON!

SALANDMOOKIES.COM



The District at Eastover, Jackson MS | 601.368.1919 or Colony Crossing, Madison MS | 601.499.1300

Are you planning on a move in 2022?

What are you waiting for? Call my Dad!

2022

MIGHTY STRONG MOVERS

Moving your furniture with pride and perfection.

769.231.9012

www.mightystrongmovers.com



"Lots of great GIFT BASKETS here at Madison Marketplace!!!"



MADISON MARKETPLACE

gifts • home • fashion • garden • baby

769-300-8040
 Madison.Marke961@gmail.com
 961 Madison Avenue
 Madison, MS 39110

Monkee's[®]
 of Ridgeland

New Year, New Styles!

SHOP NEW ARRIVALS & FALL/WINTER CLEARANCE

in store + online www.monkeesofridgeland.com

follow along @monkeesofridgleand

RENAISSANCE AT COLONY PARK • 1000 HIGHLAND COLONY PARKWAY
 SUITE 700 RIDGELAND, MS | (601) 499-1716

HIGHER EDUCATION

HOLMES COMMUNITY COLLEGE

Originally meant to focus on agriculture, Holmes Community College has come a long way from its Goodman roots, now featuring campuses in Ridgeland and Grenada. Starting off as a high school in 1911, it officially transitioned from a junior college to a community college in the 1989 school year. It allows students to earn associate of arts degrees, certificates, and/or transferability into four-year institutions such as Mississippi State in Starkville or the University of Mississippi in Oxford. Students who even score a 20 or higher on the ACT can qualify for a full-tuition scholarship.

Dr. Jim Haffey | **President**

412 West Ridgeland Avenue
Ridgeland, MS 39157
601-856-5400

BELHAVEN UNIVERSITY

Founded in 1883, Belhaven is a Christian college offering 70 areas of study for its academic majors and concentrations, as well as a plethora of Master's Degree Programs. Its science curriculum is one of only two Christian universities recognized by the White House STEM initiative. It is one of only 36 universities nationally accredited in each of the major arts — music, theatre, visual art and dance. It also has 15 NCAA Division 3 sports teams. All subjects are taught from a Christian Worldview perspective with an intended mission for its students to serve Jesus Christ in their career, personal relationships, and in the world at large.

Dr. Roger Parrot | **President**

1500 Peachtree Street
Jackson, Mississippi 39202
601-968-5940



MAKE OUR HOLMES YOUR HOLMES.



**SCORE A 20 ON THE ACT?
YOU COULD COME TO HOLMES TUITION-FREE!**

If you make a 20 on the ACT, you could qualify for a full tuition scholarship at Holmes! All you have to do is remain a full-time student and maintain a 3.0 GPA, and the cost of your tuition could be on us!

For more info call
1-800-HOLMES-4
OR VISIT HOLMESCC.EDU

Holmes
COMMUNITY COLLEGE

Holmes Community College does not unlawfully discriminate on the basis of race, color, gender, sex, pregnancy, sexual orientation, gender identity or expression, religion, national origin, citizenship, age, disability, veteran status, or genetic information. Employees, students, applicants for admission or employment, or other participants in Holmes Community College programs or activities who believe they have been discriminated against are entitled to seek relief through the Compliance Officer (662) 472-9429. Written inquiries may be e-mailed to: compliance@holmescc.edu or sent to: Compliance Office, P.O. Box 369, Goodman, MS 39079.

MILLSAPS COLLEGE

Millsaps College, founded in 1890, is one of the most prestigious colleges in the metro, turning out Rhodes scholars and having double the national acceptance rate for students going into medical school. This United Methodist-affiliated institution is also known for its writing program, with a yearly writing workshop in July (McMullans Young Writers Workshop or MYWW) that attracts high school students from around the southeastern United States. The school boasts a 9:1 student to teacher ratio and an average class size of 14 students, with all courses being taught at the honors level. It has 18 NCAA Division 3 Athletics.

Dr. Rob Pearigen | **President**

1701 North State Street
Jackson, Mississippi 39210
601-974-1000

TOUGALOO COLLEGE

Tougaloo College is an institution just south of Ridgeland and 2 miles west of the Northpark Mall. It is ranked as one of the best colleges in the Southeastern United States by the Princeton Review and US News and World Report. It is also ranked as one of the Best Historically Black institutions in the country. It has historically churned out over 40 percent of Mississippi's African American attorneys and educators. The college also offers Bachelor of Arts and Bachelor of Science degrees in 29 majors in the areas of education, humanities, social science and natural science. It boasts a student-to-faculty ratio of 15:1 and has a diverse faculty who 70 percent hold terminal degrees in their fields.

Dr. Carmen Walters | **President**

500 West County Line Road
Tougaloo, Mississippi 39174
601-977-7700

MISSISSIPPI COLLEGE

Founded in 1826, Mississippi College is the oldest institution of higher learning in Mississippi and the second-oldest Baptist college in the United States. The first coeducational college in America to grant degrees to women, MC is a Christian university known for academic excellence and commitment to the cause of Christ. MC offers more than 80 undergraduate majors, more than 50 graduate areas of study, three doctoral programs, a law school, and one of the state's finest physician assistant programs.

Dr. Blake Thompson | **President**

200 South Capitol Street
Clinton, Mississippi 39056
601-925-3000

HEALTHCARE



MERIT HEALTH MADISON

Merit Health Madison is conveniently located right off I-55 Exit 118 B in Canton. The 113,000 square foot state-of-the-art facility was opened in 2011. It has approximately 67 staffed beds and offers 24/7 emergency care, labor and delivery, surgery, orthopedics, intensive care, neurology, and a plethora of out-patient procedures. It is known for its superior care, and it was recognized as Hospital of the Year in 2021 by the Mississippi Nurses Association. There are other Merit Health locations in the metro area; one in Jackson, Flowood, and Clinton. There is an additional women's hospital in Flowood, and it is the only women's hospital exclusively for women in the state of Mississippi. The Hospital is best known for its convenient care and its fast ER service times.

Merit Health Internal Medicine (Madison)

163 River Oaks Drive Suite 201 | Canton, Mississippi 39046 | (601) 855-4717

Merit Health Central

1850 Chadwick Drive | Jackson, Mississippi 39204 | (601) 376-1000

Merit Health Bariatrics

1040 River Oaks Drive Suite 304 | Flowood, Mississippi 39232 | (601) 936-1170

Merit Health Woman's Hospital

1026 North Flowood Drive | Flowood, Mississippi 39232 | (601) 932-1000

Merit Health Cardiovascular Care

732 Clinton Parkway | Clinton, Mississippi 39056 | (601) 376-1394

BAPTIST HEALTH SYSTEMS

Back in 1908, two area physicians converted a home into the first hospital in Jackson. Today, 111 years later, it has grown from a two-doctor clinic to a hospital with over 560 staffed beds, multiple clinics, and other affiliated hospitals throughout the state. It is a hospital that delivers its superior services within a Christian environment. It receives patients not just from all 82 counties but from all 50 states, including the District of Columbia. The Hospital has over 3000 employees, approximately 535 physicians, and around 100 volunteers. In 2016, Baptist Healthplex earned the top 2% in the Nation in Patient experience award. As a part of Baptist Health systems, The Madison Healthplex performance training center is in Madison off Highway 463 and Highland Colony Parkway. The Orthopedic Center and Mississippi Sports Medicine has clinical space inside of the facility, and physical therapy is provided. Despite which location you go to, Baptist Health stems offers a patient portal that allows patients to review their medical history and record online.

Baptist Health Systems

1225 North State Street | Jackson, Mississippi 39202
(601) 958-1000

Madison Healthplex Performance Center

501 Baptist Drive | Madison, Mississippi 39110
(601) 856-7757





ST. DOMINIC'S HOSPITAL

This hospital was established in 1946 after the arrival of 7 Dominican Sisters from Springfield, Illinois, to assume operation of the Jackson Infirmary. In May of 1954, a new hospital was built on top of a Hill on Lakeland Drive, where it still is today. St. Dominic's is known for its Cancer center and the Mississippi Heart Institute. The hospital has 571 beds staffed with roughly 3,000 employees and nearly 500 physicians and specialists. It was ranked the No. 1 Hospital in the Jackson Metro Area by Health Grove. Outside of the Hospital, there are MEA medical clinics (A Part of Saint Dominic's) all around the Jackson Metro Area. It makes sure that healing ministry is available to all its patients through the guidance of the Catholic Church. They were the first to develop a continuing care retirement community in the state of Mississippi with St. Catherine's Village in Madison. Using compassionate care grounded in the Christian Faith and technology, St. Dominic's strives to provide competent care for those in the Jackson Metro Area and Beyond.

St. Dominic's Hospital

969 Lakeland Drive | Jackson, Mississippi 39216
(601) 200-2000

UNIVERSITY OF MISSISSIPPI MEDICAL CENTER

Established in 1955, the University of Mississippi Medical Center is the state's only academic health science center. More than 3,000 students are enrolled in UMMC's seven health science schools: medicine, nursing, dentistry, health-related professions, graduate studies, population health and pharmacy. UMMC provides wide-ranging patient care programs through three specialized hospitals, including Children's of Mississippi, the state's only children's hospital, Wiser Hospital for Women and Infants and the Conerly Critical Care Hospital, and University Hospital. UMMC offers the only Level I trauma center, the only Level IV neonatal intensive care unit, and the only organ transplant programs in the state. University Physicians, the faculty group practice of the School of Medicine, includes about 500 doctors, many of them among leaders in their field, who care for patients in the hospitals and clinics on campus, around the Jackson metro area, and in outreach clinics around the state. UMMC includes two community hospitals, UMMC Holmes County and UMMC Grenada. With more than 10,000 full- and part-time employees, UMMC is one of the largest employers in Mississippi. The Medical Center continues to grow, having most recently opened the \$180 million Kathy and Joe Sanderson Tower at Children's of Mississippi in November 2020.

University of Mississippi Medical Center

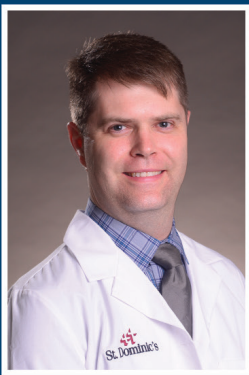
2500 North State Street | Jackson, Mississippi 39216
(601) 984-1000





St. Dominic's Family Medicine-Gluckstadt

Compassionate care for the entire family.



Stephen C.
Hammack, MD, FAAFP



Meghan Poole, MD



Chris Funkhouser, NP

Convenient location with same-day appointments available.

286 Calhoun Station Parkway, Madison, MS 39110 | 601-200-5000



PARKS &

RECREATION

RIDGELAND:

Located on McClellan Drive near Hwy 51, Hite B. Wolcott Park offers a wide variety of facilities such as baseball and softball fields, an in-line hockey rink, and a playground. Right around the corner is the Ridgeland Tennis Center, which provides Ridgeland with a 17-court tennis facility run by tennis professionals. The Ridgeland Tennis Center offers men's and women's locker rooms as well as a tennis pro shop to accommodate all your tennis-related needs.

Friendship Park is a multi-purpose park with its neighborhood clearly in mind. Located at 475 Lake Harbour Drive, this family-oriented park comes with a large pavilion, walking/jogging trail, fitness court, playground equipment, and restroom facilities. The Pavilion and trails are lit for your convenience. The Pavilion can be rented for parties.

Ridgeland's signature park, Freedom Ridge Park, is located at 235 School Street. This large 50-acre athletic facility is perfect for a family outing. Freedom Ridge Park sports fields such as soccer and softball as well as playgrounds and walking trails. Freedom Ridge Park has all the desired elements of a city park. The park also has plenty of pavilions where families can enjoy snacks and beverages from the concession stands.

If you want something closer to the water, visit the Old Trace Park. Situated right next to the Ross Barnett Reservoir, the Old Trace Park is an open space where families can come and enjoy the wonderful scenery of the Reservoir. Old Trace Park also hosts various different events thought the year, including the annual Dragon Boat Regatta.

If you enjoy biking, Ridgeland is the place for you. With over 122 miles of trails, which are used for biking, running, or walking, Ridgeland has received the Bicycle Friendly Community Bronze Award.

MADISON:

At the heart of the City of Madison lies its signature park, Liberty Park. Home to Rosa Scott Ninth Grade School, St. Paul's African Methodist Episcopal Church, and various softball and soccer fields, Liberty Park is one of the central hubs of the Madison community. Liberty Park offers a playground, batting cages, two beach volleyball courts, and a concession stand. Due to its centrality, Liberty Park hosts various community events throughout the year, including Relay-For-Life. It also contains an archery range.

Further back into the residential area of the city of Madison is Strawberry Patch Park. This seven-mile quaint neighborhood park is known for its scenic atmosphere. Located off Old Canton Road, across the street from Madison Ridgeland Academy, Strawberry Patch Park offers a walking trail that winds its way around a one-mile lake, playground equipment, and various picnic areas. In the corner of the park sits the beautiful Strawberry Patch Chapel.

CANTON:

The city of Canton offers two locations that host sporting and community events: the Canton Sports Complex and the Canton Multipurpose & Equine Center. Each has been used for sporting events in the past; however, the Canton Multipurpose & Equine Center has sponsored various community events such as concerts and rodeos. Its 2016 calendar included events with the Mississippi Reigning Horses Association and the Magnolia Cutting Horse Association. A balloon glow also took place in July 2016 with great success.

OTHER:

At the Madison Ridgeland Youth Club, numerous youth sports are offered year-round. With leagues in baseball, basketball, football, soccer, and cheerleading, the Madison Ridgeland Youth Club provides children ages 5 to 14 an opportunity to compete in the many parks within both municipalities. While most leagues compete on a local level, some teams play up to a national and state level. Registration for 2017 spring baseball started in December; registration for 2017 spring softball begins January 1. For more information about the Madison Ridgeland Youth Club, visit mryouthclub.com.



SUPERIOR CUSTOMER
SERVICE YOU CAN
RELY ON.



Call or Visit our Metro Banking Team Today

Katrena Thompson, Ridgeland, Operations Officer;
George Gammon, III, Flowood, Metro Jackson President;
Monica Hammack, Flowood, Asst. Vice President & Branch Manager;
Daniel Webb, Ridgeland Asst. Vice President & Loan Officer

Flowood Branch | **Ridgeland Branch**
601.992.7688 | 601.519.4020

Proudly serving:
Attala, Forrest, Harrison, Jackson, Lafayette, Lamar,
Lauderdale, Leake, Madison, Kemper, Neshoba, Newton,
Oktibbeha, Rankin, Scott and Winston counties.



The Citizens Bank...

MEMBER FDIC www.thecitizensbankphila.com



WELCOME TO
MADISON COUNTY!



The Celebration Begins Here.

Premium Wine & Spirits



**Madison's oldest and
most respected wine shop
for 34 years.**

1038 Highway 51, Madison
601-856-0931

Home delivery available. Find us on Moonshiners.com

Home Care You Can Count On

Over **100 YEARS** of combined management experience in senior care and service



Mike Davis
Owner



Rhonda Boles
Operations Director



Heather Schuetzle, LPN
Client Care Director



Patricia J. Coward
Community Liaison



We are available wherever you are.

HOME, HOSPITAL, REHAB, RETIREMENT AND ASSISTED LIVING, AND NURSING HOME
LONG-TERM OR SHORT-TERM NEEDS • 24-HOUR CARE AVAILABLE



Give us a call to discuss your needs today!

601.856.5660

Jackson's Premier Home Care Agency

CovenantCaregivers.com



THE SECRET'S OUT!

We're Expanding Our Pre-K4 Program



St. Anthony Catholic School is an award winning school with award-winning teachers, we believe every child is capable of reaching his or her full potential and focus on educating the whole child.

Our unique STREAM program combines STEM principles and faith-based learning with an arts-integrated education.

Call to Schedule a Tour!

601.607.7054

stanthonyeagles.org



SPRING SOCCER!

Soccer Shots is an engaging children's soccer program for ages 2-8 with a focus on character development.



Enroll today at soccershots.org/jackson

Regular & Plus Sizes available at Shayna's



Show this ad for 15% off



707 Beau Pre' Dr. / Ste. A / Ridgeland, MS
(769) 300.2519 / www.shaynasboutique.com

DINING



STEAKS & SOUTHERN STAPLES:

There is nothing more classic and appreciated than a steak in the south to wrap up a long day or week. Each of these steakhouses offer charred perfection with their twist of classic sides. All are a must visit in Madison County.

ELY'S RESTAURANT & BAR

115 W. Jackson St. | Ridgeland | (601) 605-6359

TICO'S STEAK HOUSE

1536 E. County Line Rd. | Ridgeland | (601) 956-1030

BILL'S CREOLE & STEAK DEPOT

471 Railroad Ave. | Flora | (601) 879-7296

TWO RIVERS RESTAURANT

1537 W. Peace St. | Canton | (601) 859-9999

MM SHAPLEY'S RESTAURANT

868 E. Centre St. | Ridgeland | (601) 957-8000

KOESTLER PRIME

1000 Highland Colony Pkwy. | Ridgeland | (601) 957-3753

IN & OUT:

Whether you want to sit and stay a while or grab a quick bite and go these are a couple of our local favorites.

BASIL'S

1000 Highland Colony Parkway | Ridgeland | (601) 790-1919

SOUTHERN FRIED & TRUE:

From plate lunches to po'boys and even beignets these restaurants will fuel you up and fill your soul with all the tried and true Southern dishes.

MAMA HAMIL'S

480 Magnolia St. | Madison | (601) 856-4407

TRACE GRILL

574 Hwy. 51 F | Ridgeland | (601) 607-7027

PRIMOS

515 Lake Harbour Dr. | Ridgeland | (601) 898-3400

DAVE'S TRIPLE B

4822 Route 22 (Main Street) | Flora | (601) 952-4222

FANCY & FINE:

Madison County is home to some of the finest restaurants in the state of Mississippi. These restaurants offer an immaculate array of fresh and phenomenal cuisine all made in unique perfection.

LOCAL 463

1000 Highland Colony Parkway | Ridgeland | (601) 707-7684

STRAWBERRY CAFE

107 Depot Dr. | Madison | (601) 856-3822

CAET

1000 Highland Colony Pkwy | Ridgeland | (601) 321- 9169

BURGERS:

You might be able to find a burger many places, but you'll never find one like these.

BURGERS & BLUES

2077 Main Street | Madison | (601) 899-0038

BULLDOG BURGERS

879 Lake Harbour Dr. | Ridgeland | (601) 899-4200

BLUE ROOSTER

4822 Hwy. 22 | Flora | (601) 879-3289

WATER A VIEW:

The views of sprawling water add to the dining experience of these two restaurants with our favorite views.

THE MERMAID CAFE

652 Bellevue Dr. | Madison | (601) 605-8764

COCK OF THE WALK

141 Madison Landing Cir. | Ridgeland | (601) 856-5500

SOUTH OF THE BORDER:

¡Andale! Whether you want authentic or a twist on the classics these restaurants offer stellar south of the border cuisine.

TAQUERIA LA GUADALUPE

1856 Main St. | Madison | (601) 853-8538

SOMBRA MEXICAN KITCHEN

140 Township Ave., Ste. 100 | Ridgeland | (601) 707-7950

CIAO ITALIA!

Classic pastas, pizzas and all things Italian, these are our favorites to fill you up!

FRATESI'S

910 Lake Harbour Dr. | Ridgeland | (601) 956-2929

BIAGGI'S

970 Highland Colony Pkwy. | Ridgeland | (601) 354-6600

AMERIGO

6592 Old Canton Rd. | Ridgeland | (601) 977-0563

MAD OVER MEDITERRANEAN:

As fresh and fabulous as the views from high above the Mediterranean Sea, Madison County's Mediterranean options are as rich as the culture that brought them here.

KRISTOS

971 Madison Ave. | Madison | (601) 605-2266

KRILAKIS

297 W. Jackson St. | Ridgeland | (601) 790-9463

VASILIOS GREEK CUISINE

828 Hwy. 51 | Madison | (601) 853-0028

ASIAN:

These restaurants offer some of the best sushi, hibachi and asian cuisine in the metro area, but if you want step outside of the sushi, give Thai a try.

FUSION JAPANESE & THAI CUISINE

1030 Hwy. 51 3A | Madison | (601) 790-7999

NAGOYA

111 Colony Crossing Way | Madison | (601) 856-5678



SHOPPING

CANTON HISTORIC SQUARE:

For a change of scenery, take a drive to the Canton Historic Square where you'll find a one-of-a-kind retail experience. Often considered to be one of Mississippi's best-kept shopping secrets, Canton's Historic Square combines the character of the traditional Southern town with quality of boutique shopping. New shops are opening with increasing frequency as more areas around town are renovated. Once you've spent some time exploring the Historic Square's shops, check out some of Canton's museums, such as the Canton Movie Museum. Home to one of only seven unaltered, pre-Civil War courthouses, Canton's rich history is on display around every corner and serves as the perfect atmosphere for an afternoon shopping adventures.

OLD MADISON STATION DISTRICT:

Nearby Madison's famous Red Caboose, you'll find a variety of local shopping options. Persnickety has a wide range of products and Apple Annies utilizes a Victorian house for its emporium of gourmet items, gifts and accessories. This distinctive shopping center is a great place to find jewelry, home decorations and furnishings, purses and a wide selection of accessories. Situated off of the City of Madison's Main Street next to the train tracks, the Old Madison Station District is in a conveniently located area and provides an exceptional shopping experience.

GRANDVIEW SHOPPING DISTRICT:

This amalgamation of big-brand favorites has become one of the major hot spots for large chains in Mississippi. This shopping center is located right off Interstate 55 in Madison and houses major chains such as Miskelly's, Ulta, Walmart, Dick's Sporting Goods, Best Buy, PetCo and Sam's Club. Check out Madison's Malco Grandview movie theater or swing by Chick-Fil-A or Backyard Burger for dinner. With all of this and more, the Grandview Shopping District is a great one-stop-has-it-all shopping experience.

COLONY CROSSING:

In case two large shopping centers haven't got you covered, Colony Crossing provides another powerhouse retail center in Madison. With everything from French manicures to Crumbl Cookies, Colony Crossing offers a wide range of unique options for shoppers. Located on the opposite side of Interstate 55 from Grandview, Colony Crossing is also a convenient place to visit Kroger's to buy groceries. Try Nagoya's Sushi and Hibachi, or Sal and Mookie's for fine dining. With a range of stores that can satisfy even the pickiest of shoppers, Colony Crossing

is the ideal place for a day or night out on the town.

JACKSON STREET DISTRICT:

Located near the railroad tracks in the heart of the city of Ridgeland, the Jackson Street District is one of Ridgeland's most iconic shopping areas. With a contemporary blend of both modern and classical architecture, this shopping district offers a plethora of boutiques and restaurants that will surely please any shopping connoisseur. Ely's Restaurant is a local favorite. M7 Coffeehouse is a favorite spot to sit and sip. Also offering a handful of specialty stores, the Jackson Street District is a quaint shopping experience that you will not want to miss.

RENAISSANCE AT COLONY PARK:

One of the epicenters of the retail scene in Ridgeland, Renaissance at Colony Park has become the premiere shopping location in the Madison County area. Situated off I-55's Old Agency Road exit, Renaissance offers the most luxurious shopping experience in the state. Among its lavish old world European architecture, Renaissance is the perfect place to spend the day browsing various shops and boutiques such as Anthropologie, Ann Taylor Loft, Brooks Brothers, and more. Charming Charlie and Monkee's are two more options for your outfit needs. Visit Another Broken Egg for a gourmet brunch that will dazzle your taste buds. For lunch, grab a bite at the critically-acclaimed Five Guys Burger and Fries. Biaggis and CAET Seafood/Oysterette round out the day as potential dinner options, along with fine dining establishments such as Koestler Prime. Smooth jazz combined with the

magnificent fountain and lights strung up between buildings creates a romantic atmosphere for the night. Renaissance has it all.

TRACE STATION:

Situated at the corner of Highway 51 down the road from the Jackson Street District, the Trace Station is another boutique-friendly shopping center in the City of Ridgeland. If you are looking for unique gifts, fine art, gourmet food, or antiques, Trace Station is the place for you. Shopping for that special person in your life? Visit Edible Arrangements! Need new tennis shoes fitted or some sports apparel to add to your workout outfit? Fleet Street Sports is here for you. It's hard to pass Trace Station up with so many options to choose from.

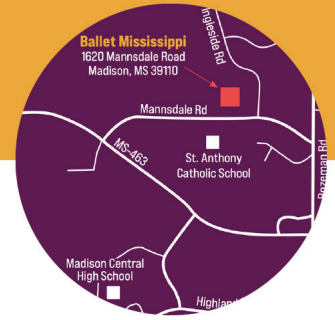
NORTHPARK:

Looking for an indoor shopping facility to escape the Mississippi heat? Check out Northpark off of County Line Road in Ridgeland. Offering over 130 different shops within a massive two-story building, Northpark Mall is sure to meet your shopping needs. Northpark not only has the classic department stores, such as Dillard's, Belk, and JC Penney, but also offers a wide selection of smaller chains like Journey's and Buckle.



WE'RE EXPANDING!

ballet mississippi



1620 Mannsdale Road in Madison
Visit balletms.com to register for 2022 classes & more!



OFFERING: Spin, Yoga, BARRE, Pilates

At GearinUp Fitness our motto is "Taking on fitness one session at a time."

In today's society, health and wellness is on the upswing as people take more concern and control over their health. GearinUp Fitness will offer customers on the edge spin sessions, accompanied with strength and muscle toning sessions.

You don't need a crazy, insane workout to receive great results. Although our customers think our sessions are a bit insane and crazy. You need a challenging, consistent workout coupled with good eating habits, to receive great results, lasting results.

So don't wait any more! Come let our team of instructors help sculpt and transform you. Let us help you GearUp your fitness journey.

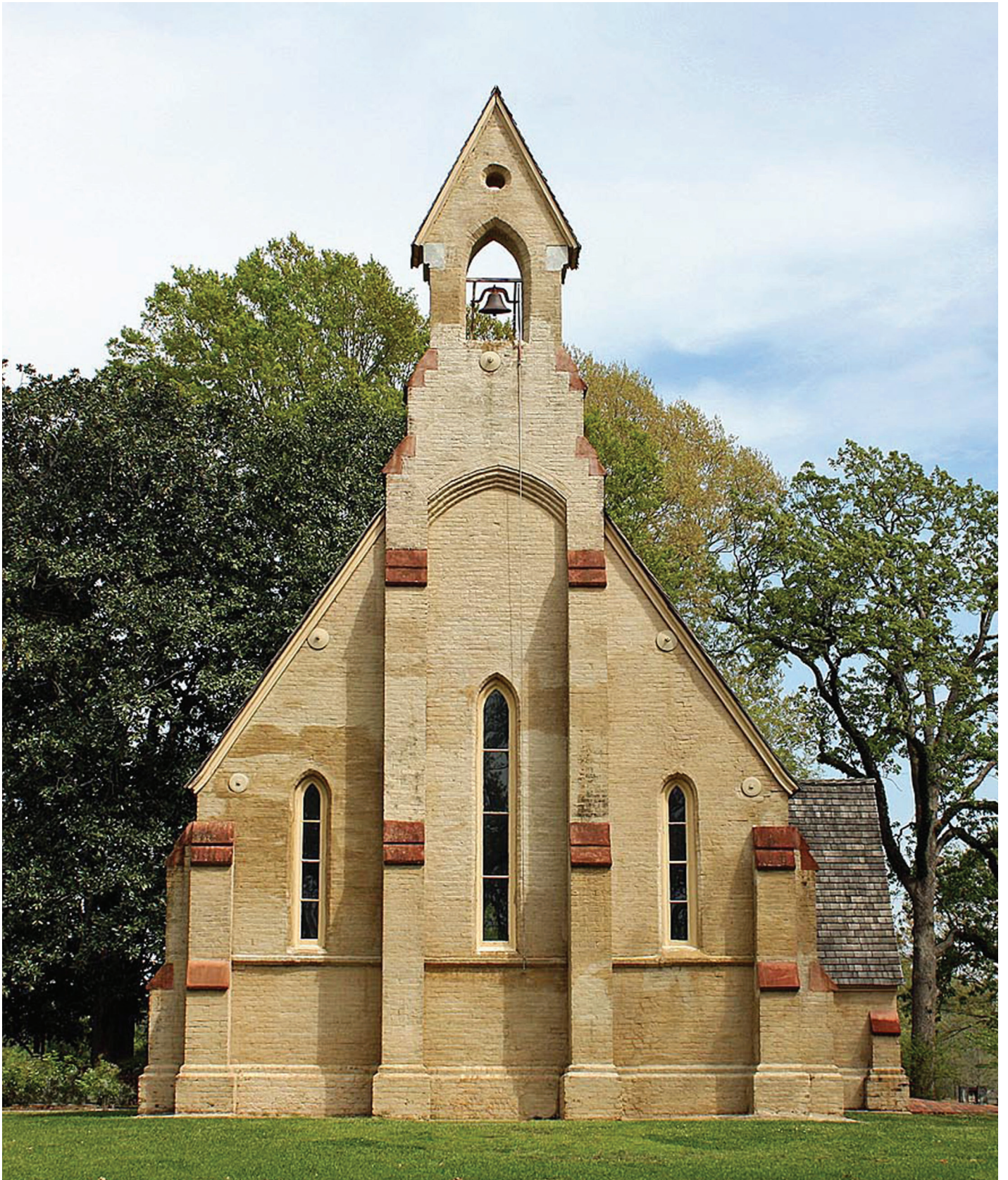


Gearin^upFitness

Discipline + Focus + Action = Success

123 Grandview Boulevard • Suite L • Madison, MS 30110
601-937-7654 • www.gearinupfitness.com

CHURCHES



BAPTIST

BROADMOOR BAPTIST

1531 Highland Colony Pkwy. | Madison | (601) 898-2345

CENTER TERRACE BAPTIST

605 East Peace St. | Canton | (601) 859-4186

CHURCH OF THE HIGHLANDS

670 Highland Colony Parkway | Ridgeland | (601) 499-6000

COLONIAL HEIGHTS BAPTIST

444 Northpark Dr. | Ridgeland | (601) 956-5000

FIRST BAPTIST

431 N. State St. | Jackson | (601) 949-1900

FIRST BAPTIST

3316 S. Liberty St. | Canton | (601) 859-3172

FIRST BAPTIST OF FLORA

102 Jackson St. | Flora | (601) 879-8022

FIRST BAPTIST OF MADISON

2100 Main St. | Madison | (601) 856-6177

FIRST BAPTIST OF RIDGELAND

302 West Jackson St. | Ridgeland | (601) 856-6139

HIGHLAND COLONY BAPTIST

1200 Highland Colony Parkway | Ridgeland | (601) 856-4031

NEW BIRTH FELLOWSHIP

837 Old Agency Rd. | Ridgeland | (601) 856-5279

NEW LIFE BAPTIST

385 N. Old Canton Rd. | Madison | (601) 715-6593

NEW TRUELIGHT BAPTIST

363 John Day Rd. | Canton | (601) 859-5237

PILGRIM REST MISSIONARY BAPTIST

852-A Madison Ave. | Madison | (601) 856-2609

PINELAKE MADISON/RIDGELAND CAMPUS

223 Old Jackson Rd. | Madison | (601) 829-4500

PLEASANT GIFT MISSIONARY BAPTIST

2055 Pleasant Gift Rd. | Canton | (601) 859-3004

RIDGECREST BAPTIST

7469 Old Canton Rd. | Madison | (601) 853-1090

RIDLEY HILL MISSIONARY BAPTIST

1034 N. Livingston Rd | Madison | (601) 853-7453

ROCKY HILL BAPTIST

4610 Greens Crossing Rd. | Ridgeland | (601) 362-4571

TRACE RIDGE BAPTIST

238 Lake Harbour Dr. | Ridgeland | (601) 856-2529

TWIN LAKES BAPTIST

673 Lake Cavalier Rd. | Madison | (601) 856-2305

CATHOLIC

SACRED HEART CATHOLIC

238 E. Center St. | Canton | (601) 859-3749

ST. FRANCIS OF ASSISI

4000 W. Tidewater Ln. | Madison | (601) 856-5556

ST. JOSEPH CATHOLIC

127 Church Rd. | Madison | (601) 856-2054

HOLY CHILD JESUS

315 Garrett St. | Canton | (601) 859-2957

CHRISTIAN SCIENCE

FIRST CHURCH OF CHRIST, SCIENTIST

731 S. Pear Orchard Rd., Suite 9 | Ridgeland | (601) 952-0307

CHURCH OF CHRIST

LAKE HARBOUR CHURCH OF CHRIST

338 Lake Harbour Dr. | Madison | (601) 856-2165

CHURCH OF JESUS CHRIST

CHURCH OF JESUS CHRIST OF LATTER DAY SAINTS

243 Hoy Rd. | Madison | (769) 226-8181

CHURCH OF GOD

OLDE TOWNE COMMUNITY CHURCH

220 W. Ridgeland Ave. | Ridgeland | (601) 856-0652

HOLY CITY CHURCH OF INTERNATIONAL EM-POWERMENT

251 Kearney Park Rd. | Flora | (601) 879-3999

EPISCOPAL

CHAPEL OF THE CROSS

674 Mannsdale Rd. | Madison | (601) 856-2593

GRACE EPISCOPAL

161 E. Peace St. | Canton | (601) 859-2680

ST. COLUMB'S EPISCOPAL

550 Sunnybrook Rd. | Ridgeland | (601) 853-0205

JEHOVAH'S WITNESSES

KINGDOM HALL OF JEHOVAH WITNESSES

2780 S. Liberty St. | Canton | (601) 859-8613

METHODIST

CHINA GROVE A.M.E.

1060 Mannsdale Rd. | Madison | (601) 856-7348

FIRST INDEPENDENT METHODIST OF MADISON

1556 Hwy 51 N. | Madison | (601) 672-1240

FIRST UNITED METHODIST

3301 S. Liberty St. | Canton | (601) 859-4621

FIRST UNITED METHODIST OF RIDGELAND

234 W. Jackson St. | Ridgeland | (601) 856-6456

FLORA METHODIST

142 Carter St. | Flora | (601) 879-8642

MADISON UNITED METHODIST

2050 Main St. | Madison | (601) 856-6058

PARKWAY HILLS UNITED METHODIST

1468 Highland Colony Pkwy. | Madison | (601) 856-2733

SHARON A.M.E. ZION

1777 Sharon Rd. | Canton | (601) 859-6077

ST. MATTHEW'S UNITED METHODIST

7427 Old Canton Rd. | Madison | (601) 856-9581

ST. PAUL A.M.E. ZION

505 S. Union St. | Canton | (601) 859-1904

PENTECOSTAL

APOSTOLIC LIGHTHOUSE

1529 Hwy. 43 S. | Canton | (601) 859-7363

PARKWAY PENTECOSTAL

601 Reunion Pkwy. | Madison | (601) 853-2607

PRESBYTERIAN

FIRST PRESBYTERIAN

202 E. Peace St. | Canton | (601) 859-4738

FIRST PRESBYTERIAN

1390 N. State St. | Jackson | (601) 353-8316

FIRST PRESBYTERIAN

7717 Old Canton Rd. | Madison | (601) 856-6625

GRACE CHAPEL PRESBYTERIAN

307 New Mannsdale Rd. | Madison | (601) 856-7223

HIGHLANDS PRESBYTERIAN

1160 Highland Colony Pkwy. | Ridgeland | (601) 853-0636

MADISON HEIGHTS PCA

415 Bozeman Rd. | Madison | (601) 605-9929

PEAR ORCHARD PRESBYTERIAN

750 S. Pear Orchard Rd. | Ridgeland | (601) 956-3283

OTHER

THE CHURCH TRIUMPHANT

731 S. Pear Orchard Road Suite 43 | Ridgeland | (601) 977-0007

HOLY TRINITY ANGLICAN CHURCH

432 Bozeman Rd. | Madison | (601) 898-5035

KEYPOINTE CHURCH INT'L

614 Magnolia St. | Madison | (601) 605-2880

ST. PETER'S ORTHODOX

180 Saint Augustine Dr. | Madison | (601) 856-3894



rooted in balance + *ready* to advance

ST. ANDREW'S EPISCOPAL SCHOOL

FOUNDATIONS — GRADE 12
JACKSON & RIDGELAND, MISSISSIPPI
GOSAINTS.ORG

Because children achieve more when they feel strong and supported, St. Andrew's carefully calibrated Middle School program fosters academic, social, and emotional growth together.

Making good choices and good friends, your child thrives as an ambitious and effective learner and citizen.



Where Public Meets Private

Coming Together for The Betterment of All

The Madison County Economic Development Authority is a public entity that offers a broad array of economic development, business development, and corporate site location assistance services to new and expanding businesses and industry. The Madison County Business League & Foundation is a private, stakeholder-based support organization that works with business owners and decision makers to discuss topics that affect economic development. Together, we continue to build upon the economic development infrastructure of Madison County. We recognize and salute the industry and businesses for the contribution they make towards our quality of life.



135 Mississippi Parkway, Canton, MS 39046
601.832.5592 | madisoncountybusinessleague.com

 CONNECT WITH US ON FACEBOOK!



Welcome to Private Collection.

We sell products that come from our desire to live life simply and to live it well. Our pre-loved clothing is accessible, fun, stylish and most importantly, we are sustainable. We want to represent our family values of quality, honesty and simplicity. A good wardrobe always has the basics, and we got you covered not only with basics but unique and timeless clothing pieces.



PRIVATE COLLECTION
CONSIGNMENT

101b Village Blvd.
Madison, Mississippi
Call (601) 607-6004

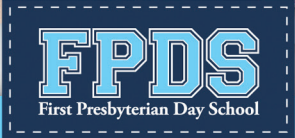
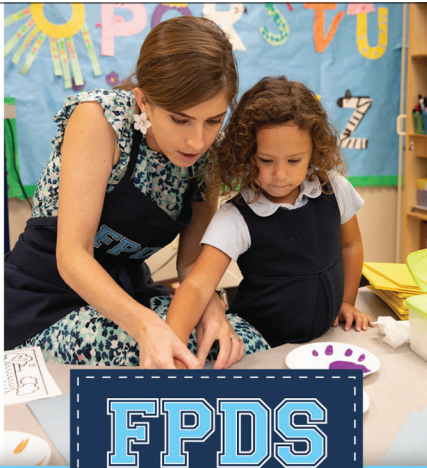
MADISON-RIDGELAND ACADEMY



Find Your Home at MRA
MRA: transforming lives by educating each child's mind, body, and spirit.

7601 Old Canton Road
Madison, Mississippi 39110
601.856.4455 • www.MRApats.org

TOURING NOW FOR
2022-2023
MRA SCHOOL YEAR



FPDS is a special and unique place. To be able to work in a school where the love and grace of Jesus Christ is at the forefront of everything we do is such a blessing. Having my own children here, I am able to see what an important and positive impact it has on the students outside the walls of the building. I am grateful for such a strong educational environment where the heart of the child is truly what matters most.

- Ann Louise McNamara, K4 Teacher

SCHEDULE YOUR FAMILY'S TOUR TODAY!

Enrolling Now for K3-6th Grades for the 2022-2023 School Year

1390 NORTH STATE STREET | JACKSON, MISSISSIPPI 39202
601.355.1731 | FPDS.ORG

YOUR FAVORITE

— PIZZA —
— SANDWICH —
— SALAD —

TAKEOUT SPOT



Skip the line,
order online:
eatbasils.com

Basil's
KILLER EATS



Blowout before you go out!

HAIR | DRY BAR | MAKEUP | LASHES | ETC.

#HairBar is overjoyed to provide luxurious hair, dry bar, facial, and makeup services.

Want to look fabulous with a polished hairstyle to go out? Then blow out before you go out! Try #HairBar's blow out services today and look your very best!

#HAIRbar
blow out before you go out

610 Hwy 51 | Suite F | Ridgeland, Ms. 39157
601-707-5805 | www.hairbar.ms



**PROTECT
YOUR
HOME
WITH A
QUALITY
ROOFING
SYSTEM!**

Proudly serving
Madison County.
Free Inspections.

601-559-1758 + PRO-SHIELDROOFS.COM



The ultimate farm to table culinary experience with hands-on cooking classes, demonstration classes, wine tastings, rehearsal dinner, wedding receptions, bridal brunch and catering.

**STOP BY OUR KITCHEN RETAIL
SHOPPE FOR ALL YOUR
CULINARY NEEDS!**

1030 MARKET STREET • FLORA, MS 39071 • 601-506-6821 • Visit us online at: www.farmerstableinlivingston.com

MADISON C O U N T Y

55,000 readers
west of I-55 plus
targeted digital
audiences.

Your arts, entertainment
and culinary source
capturing our rich,
Southern culture and the
subtle, local nuances
around Madison County,
Mississippi.



We can build a digital audience specifically for you.

Six times a year from Madison to Belhaven, plus your specific targeted audience, on their devices where they are consuming content 24/7/365.



TARGETED

We reach your audience where they're consuming content.



DATA-DRIVEN

Your display and video ads appear on top-tier channels like ESPN, People, WebMD, Wordscapes, Kik.



DIGITAL CASE STUDIES

Generate leads with Facebook, Google and other omnichannel marketing solutions as well as Programmatic.

info.onlinemadison.com/marketing

THE LAST SHOT

Photo by Chris Todd



The Ross Barnett Reservoir attracts all kinds of wildlife — from alligators to great egrets.

LOCATED IN MISSISSIPPI'S LARGEST METROPOLITAN (METROPOLITAN STATISTICAL AREA) – JACKSON
MADISON COUNTY HAS THE **2ND HIGHEST MILLENNIAL GROWTH** IN MISSISSIPPI

109,145

MADISON COUNTY



597,727

JACKSON, MS MSA



14.6%

GROWTH
(IN THE PAST 10 YEARS)



\$241,705 - MEDIAN HOUSING VALUE

\$68,372 - MEDIAN HOUSEHOLD INCOME

MADISON
COUNTY
SCHOOLS

**TOP
10**

IN MS FOR LANGUAGE
ARTS, MATH AND SCIENCE

#1

MOST STAR STUDENTS
IN MISSISSIPPI
BASED ON ACT SCORES

“A+ GRADE” MADISON COUNTY PUBLIC SCHOOLS

93.6% HIGH SCHOOL
DEGREE OR HIGHER



OVER 500

UNIQUE RETAIL
OPERATIONS IN
THE REGION

\$116.69

RELATIVE VALUE OF
\$100 IN MISSISSIPPI

37

MEDIAN
AGE



Ross Barnett Reservoir
has over 33,000 acres of
surface area perfect for
fishing, sailing, and water sports



Madison County boasts many miles of natural
surface, multi-use and paved bike trails. Ridgeland
was named the 2018 healthiest hometown and is
a bronze level bicycle friendly community



Since 2008, Sante South has
grown into the largest wine and
culinary extravaganza in the state
of Mississippi

562

RESTAURANTS

58

PARKS

639

CHURCHES

14

GOLF COURSES

31

MUSEUMS



The Flora Butcher Now Carrying A5 Japanese Wagyu, American Wagyu & Prime Angus Beef

Dave's BBB

Dave's Triple B serves locally sourced salads, sandwiches, burgers, bbq, daily specials, and blue plates featuring Flora Butcher meats.

601.952.4222

Mon - Sat 10:30am - 2:00pm
Dinner Fri 5-8:30 p.m.

4822 Route 22 | Flora, Mississippi



The FLORA BUTCHER

The Flora Butcher is an old world style butcher shop specializing in local animals, local artisan products and Raines Farm Wagyu beef.

601.509.2498

Tue - Fri 10am - 7pm, Sat 9am - 6pm
4845 Main Street | Flora, Mississippi

We Cater Any Size Event





KENNEDY & Co.
REAL ESTATE, INC.



101 LAKE SHORE COVE



Rare Find! Overlooking the Lake!
Approximately 8.5 Acres +/-!
Beautiful Front Porch for Relaxing!
Farmhouse Style! Open Concept
Plan! Eat at Bar! Stainless
Appliances! Dining Area!
Greatroom with Fireplace! Master
Suite Down! Upstairs Loft or Bonus
Area Room! - \$599,000



JUANITA KENNEDY
601.955.9731 • 601.898.2999

WWW.KENNEDY-REALESTATE.COM



GUNS • AMMO • CLASSES • GUNSMITHING

**MISSISSIPPI'S PREMIER SHOOTING DESTINATION
IS SO MUCH MORE THAN JUST A RANGE.**

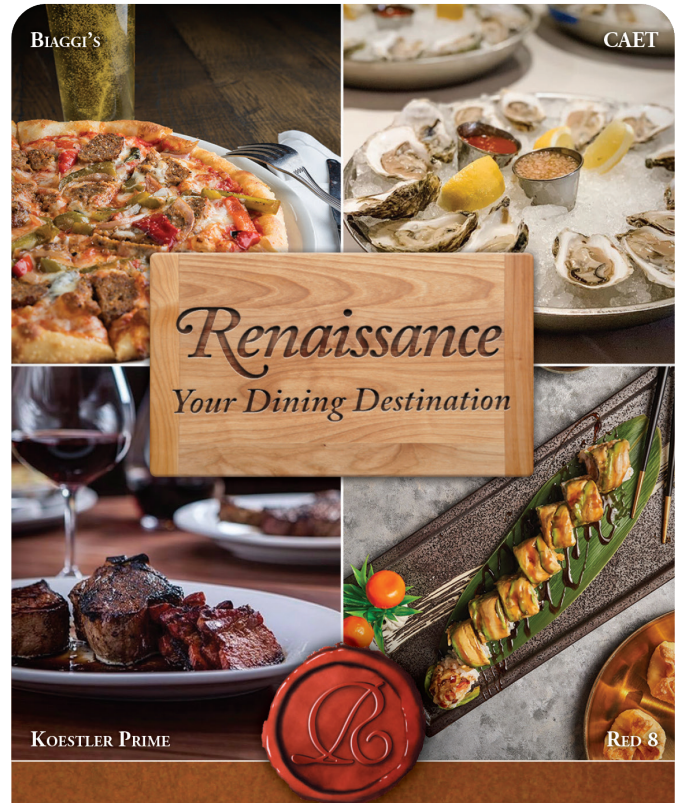
- MACHINE GUN RENTAL
- FULL RETAIL SHOWROOM
- IN-STOCK AMMO
- COMPLETE TRAINING CENTER
- WOMEN'S CLASSES
- HYDRO DIPPING
- ON-SITE GUNSMITH
- RANGE MEMBERSHIPS
- FATS VIRTUAL FIREARM SIMULATOR

EXPERIENCE THE RANGE FOR YOURSELF:

112 DEES DR. • MADISON, MS 39110 • 601-746-2202

M-TH: 10 AM - 6 PM | F-SAT: 10 AM - 7 PM | SUN: 1 PM - 6 PM

RANGEBYJIMMYPRIMOS.COM



KOESTLER PRIME

RED 8

RENAISSANCE

AT COLONY PARK

Whether you're in the mood for fine dining, something casual or even something delectable to prepare at home...

RENAISSANCE HAS THE FLAVOR
YOU'RE LOOKING FOR.



FIND US ON FACEBOOK

I-55 at Old Agency Road, Ridgeland, Mississippi | 601.519.0900

See all our retail stores and restaurants online at
www.RenaissanceAtColonyPark.com

For leasing information, contact The Mattiace Company at 601.352.1818

GETTING SETTLED

ELECTRICITY

Call Entergy, located at 1165 Highway 51 North in Madison, at (800) 368-3749. Residential deposits may vary, but the base rate is \$200, and the connection fee is \$45.

NATURAL GAS

Atmos Energy can be reached by calling (888) 286-6700. Centerpoint Energy can also help other customers. Reach Centerpoint at (800) 371-5417. Residential deposits are based on a credit check; however, deposits start at \$75.

WATER AND SEWER

Each municipality handles its own water and sewer customers. Newcomers to Madison will need to call the Water Department at (601) 856-8958 for info on hook-ups and billing. New services at the Madison Water Department include \$100 for owners and \$300 for renters.

Ridgeland residents may call (601) 856-3938 for information on water and sewer services. Connection cost is either \$50 or \$75, depending on the size of the meter.

Flora residents will need to go to City Hall, located at 168 Carter Street, to activate their water. A \$100 deposit for renters and a \$40 deposit for owners will be required before service. Same day connection will be provided, with few exceptions.

Most Canton utilities are handled through Canton Municipal Utilities. CMU officers are located at 127 West Peace Street. They provide water, gas, and power services. Renters must pay a \$300 deposit. Owners must pay a \$200 deposit. Call (601) 859-2921 for more information.

Trash and Recycling

Waste Management, which can be reached by calling (601) 922-9647, provides twice-weekly service to residents of Ridgeland and Madison. The daily schedule varies by location, and the fee is assessed on your water/utility bill.

CAR TAGS

Automobile licenses must be purchased annually and are due during the month in which the vehicle was purchased. For new residents, Mississippi law requires that automobiles be registered within 30 days of moving into the state. Vehicles purchased new or used from a dealer or individual must register within seven days. If you moved from another country within Mississippi, the county Tax Collector's office says you do not need to get a Madison County tag until your current tag expires. Three locations are available for your convenience:

Madison: 171 Cobblestone Drive
(601) 856-4472

Canton: 146 West Center Street
(601) 859-5226

Flora: 168 Carter Street
(601) 879-9537

DRIVER'S LICENSE

New residents of Mississippi must apply for a driver's license within 60 days. If the applicant has a valid out-of-state license, only a rules, signs, and eye test is required. If the applicant's out-of-state license has expired, a road test may be required. A Social Security Card must be shown. Minors making an application must be at least 16 years of age and present a Social Security Card and birth certificate for proof of age.

HOMESTEAD EXEMPTION

If you are buying your home in Madison County and occupy it as your primary residence, you may be eligible for Homestead Exemption. Applications are made at the Madison County Tax Assessor's Office. For more information, contact Tax Assessor Norman Cannady. Officers are located on Highway 51 in Ridgeland and at the Madison County Complex in Canton.

POST OFFICE

Home delivery of mail and post office boxes are available in each local community. See which post office is closest to your home:

Ridgeland: 611 South Pear Orchard Road

Madison: 990 Highway 51

Flora: 4853 Main Street

Canton: 150 S. Union Street

NEWSPAPERS

The Madison County Journal is the county's only independently owned and operated weekly newspaper. The Journal runs every Thursday. As a subscriber every other month, you also receive the Madison County Magazine, a lifestyle supplement to the newspaper. Call 601-853-4222 to subscribe.

VOTER REGISTRATION

Potential voters must be registered at least 30 days before any election to be eligible to vote. To register for city, county, state, and federal elections contact Circuit Clerk Anita Wray at (601) 859-4365.





Dedicated to Your Care

At **Mississippi Baptist Medical Center**, we're passionate about delivering the right care at the right time, with your safety and comfort in mind.

That's why we're consistently recognized as a regional and national leader in providing safe, patient centered care.

Because we know, the first step to getting well is getting better care.



baptistonline.org/mbmc

Get Better.



Touching lives. Powering the future.

At Entergy Mississippi, the communities we serve are the communities we call home. That's why we stay active and involved – because we know our responsibility reaches beyond the power grid. So, we invest in education and industry, while developing new solutions to power tomorrow. As a community, our successes fuel each other. We're all on a circuit. And together, we power life.

entergymississippi.com



A message from Entergy Mississippi, LLC
©2022 Entergy Services, LLC. All Rights Reserved.

WE POWER LIFE®

STORAGE MAX[®]

Have you reached your Max?

17 Locations To Serve You!

BRANDON EAST

1140 Oak St., Brandon
601-591-4145

BYRAM

6773 Siwell Rd., Byram
601-373-4303

CLINTON

517 Springridge Rd., Clinton
601-924-8822

CLINTON EAST

203 Johnston Place, Clinton
601-925-5151

CLINTON 2

478 Springridge Rd, Clinton
601-924-5837

CLINTON NORTH

5703 Us 80, Jackson
601-968-0980

CROSSGATES

100 Westside Cv. Pearl/Brandon
601-932-3636

DOWNTOWN

304 S. State St., Jackson
601-352-3644

GERMANTOWN

358 Church Road, Madison
601-898-0100

GLUCKSTADT

317 Distribution Drive, Madison
601-898-9747

GRANTS CROSSING

551 Grants Crossing, Brandon
601-919-8006

LAKELAND

4600 Lakeland Dr., Flowood
601-936-4646

LUCKNEY

842 Luckney Rd., Brandon
601-824-3293

MADISON

317 Distribution Dr., Gluckstadt
601-898-9747

METROCENTER

4565 Lynch St. Ext. Jackson
601-923-9806

NORTHTOWN

42 Northtown Dr., Jackson
601-977-1124

SOUTHWEST

9305 W. Hwy. 18, Raymond
601-372-4809



NEWEST LOCATION:

RIDGELAND
326 New Pointe Drive
Ridgeland MS
601-992-2226



www.StoMax.com



BECKHAM

CUSTOM JEWELRY CO.

THE DISTRICT AT EASTOVER | STE. D110
601.665.4642 | info@beckhamjewelry.com

JACKSON'S BESPOKE JEWELER

Not only do we help you design the perfect ring, we also help you plan the proposal of her dreams.

